

BEFORE warranty repair you MUST get Prior Authorization:

WARRANTY

(Effective October 30, 2015)

HIX will automatically register the equipment on the date it was shipped to you or your distributor. If the equipment was not purchased directly from HIX, but through a distributor (either domestic or foreign), please keep a copy of their sales invoice showing the serial number and date it was sold/shipped to you with this warranty. In this case, we will use the distributor's invoice date as the beginning warranty date. **STAPLE A COPY OF YOUR RECEIPT TO THIS WARRANTY** and keep in a safe place to provide verification of your warranty should a problem occur. Thank you.

Please fill in the following information and attach a copy of your receipt for your records.

Date Purchased: _____ From: _____

Model #: _____ Serial #: _____

This warranty applies to equipment manufactured by the HIX Corporation (HIX), Pittsburg, Kansas, U.S.A. HIX warrants to the original purchaser, its Ovens and Dryers, Heat Transfer Presses, Mug Presses, Mug Glazer, Retensionable Screen Frames, Textile Printers, Spot Heaters, and Exposure Units against defects in workmanship and material, except for wear and tear for a period of "One Year" from the date of purchase. HIX warrants its Accessories, Reten Splines/Hardware/Tool Kit, and Shuttle for a period of 90 days from the date of purchase. Thermatrol and doughXpress products are covered under separate warranty.

In the event of a defect, HIX, at its option, will repair, replace or substitute the defective item at no cost during this period subject to the limitations of insurance and shipping costs stated below.

In the case of heat transfer presses (except the Hobby Lite), HIX warrants the heat casting for the "Life" of the machine for the original purchaser. If a part becomes obsolete at the time for repair, and/or cannot be reasonably substituted for, HIX will credit, at half the then current list price or last recorded price, only that part toward a new machine or any product HIX offers. This credit offer shall be the sole responsibility of the HIX Corporation in the event of an obsolete part.

This warranty does not cover belts, rail tape, pads, mug wraps, canvas, rubber blankets, bulbs, glass, rod ends, turn buckles on printers or damages due to accident, misuse/abuse, alterations or damage due to neglect, shipping or lack of proper lubrication or maintenance. HIX shall not be responsible for repairs or alterations made by any person without the prior written authorization by HIX. This warranty is the sole and exclusive warranty of HIX and no person, agent, distributor, or dealer of HIX is authorized to change, amend or modify the terms set forth herein, in whole or in part.

In the case of a problem with the equipment identified herein, HIX Corporation should be contacted during regular business hours to discuss the problem and verify an existing warranty. HIX personnel will assist the customer to correct any problems which can be corrected through operation or maintenance instructions, simple mechanical adjustments, or replacement of parts. In the event the problem cannot be corrected by phone, and upon the issuance of a return authorization by HIX, the equipment shall be returned to HIX or an authorized service representative. All insurance, packaging and shipment/freight costs are solely the responsibility of the customer, and not that of HIX, and HIX shall not be responsible for improper packaging, handling or damage in transit. Contact HIX customer service for complete return authorization information. Correct shipping boxes are available from HIX.

This expressed warranty is given in lieu of any and all other warranties, whether expressed or implied, including but not limited to those of merchantability and fitness for a particular purpose, and constitutes the only warranty made by HIX Corporation.

In no event shall HIX's liability for breach of warranty extend beyond the obligation to repair or replace the nonconforming goods. HIX shall not be liable for any other damages, either incidental or consequential, or the action as brought in contract, negligence or otherwise.

This warranty gives you specific legal rights and you may also have other rights which vary from state to state.



Design and Manufacturers of Graphic Imaging, Commercial Food, Industrial and Custom Drying Equipment

1201 E. 27th Terrace • Pittsburg, KS 66762 • U.S.A.

Web site: www.hixcorp.com • Phone: (800) 835-0606 • Fax: 620-231-1598

E-Mail: customerservice@hixcorp.com • E-Mail: sales@hixcorp.com

VERTICURE-2D

Direct to Garment Dryer

OWNER'S MANUAL



Verticure-2D shown

HIX CORPORATION
For Customer Service, Call **1-800-835-0606**
or Visit www.hixcorp.com

CONTENTS

Installation & Setup	2
Temperature Time Control	3-4
Recirculating Blower Control	4
Air Exchange Control	4-5
Loading Garments	5
Warranty	8

BEFORE warranty repair you MUST get Prior Authorization:

OPERATION

Press the “UP” or “DOWN” buttons to set the desired time for the bottom drawer.

Press the “Menu” button once again to lock in the setting.

Timer Operation

By pressing the “START” button, the timer will begin counting down.

At the end of the set time, the timer will begin beeping and will continue to beep until the “RESET” button is depressed.

One timer is provided for each drawer.

Recirculating Blower Control



Figure 3

An adjustable recirculating air control is provided (Figure 3). This knob adjusts for the volume of convection heated airflow that is allowed to circulate inside the oven. Inks with higher amounts of water will benefit by setting this knob at a higher setting. Be sure to **pre-test temperature, time and airflow settings** to optimize performance of the oven and cure fastness of the ink used.

Open the drawers and adjust the mesh rack height for the appropriate garment type.

For thinner garments, i.e. T-shirts, position the mesh rack in the high position (Figure 4).

2" Height increase
over lower position

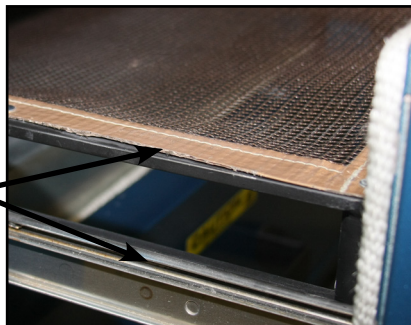


Figure 4

OPERATION

There are four pegs on the mesh rack that line up with four holes in the corners of each drawer (Figures 5 & 6). Be sure the pegs fit into the holes to secure the mesh rack in place.

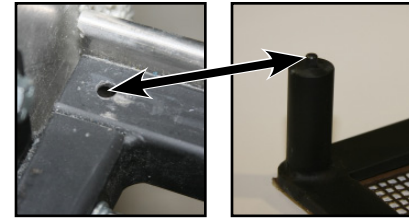


Figure 5

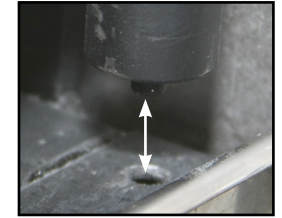


Figure 6

For thicker garments, i.e. sweats and hoodies, flip the mesh rack over and set the frame inside the lip of the drawer (Figure 7).

Lower position allows 4" clearance for garments.



Figure 7

Load the product to be cured. (Figure 8).



Figure 8

Close the drawer and start the timer for the desired cure time. Normal curing times are between 1-3 minutes. At the end of the prescribed time, the timer will beep and the product can be removed from the drawer.