



Sign & Poster Inks

5500 Daylight Fluorescent

Excellent printability, brilliance and a velvety smooth finish with the same fast drying qualities as 5500 Series Flat Poster Screen Ink.

Substrates: paper, cardboard and point of purchase display signs

Drying: air-dry 20 min, jet-dry in seconds

Opacity: for best effects print on white backgrounds

Thinners, Additives: 5500 Thinner or mineral spirits or 5560 Fast Thinner .

Fabrics: for maximum brilliance use multifilament meshes 10XX to 12XX. For monofilaments use 200 mesh or coarser.

Cleaning: 2555 Screen Wash or mineral spirits

QUART [51]

NAZ-5590Q	Vibrant Magenta *
NAZ-5592Q	Mint Green *
NAZ-5593Q	Crimson Red *
NAZ-5594Q	Citron Yellow *
NAZ-5595Q	Poppy Red *
NAZ-5596Q	Golden Yellow *
NAZ-5598Q	Tropical Orange *

*while supplies last

GALLON [51]

NAZ-5595G	Poppy Red
-----------------	-----------

MODIFIERS [51]

NAZ-5530Q	Transparent base to reduce color, ink cost or fine detail, qt	
NAZ-5530G	Transparent base, gal	
NAZ-5530-5G	Transparent base, 5 gal	
NAZ-5536Q	Extender base increases coverage	without
	affecting ink viscosity, qt	
NAZ-5536G	Extender base, gal	
NAZ-5549Q	Binder varnish improves adhesion and	rub resistance
	on absorbent stock, qt	
NAZ-5549G	Binder varnish, gal	

SCREEN WASH [58]

NAZ-2555G	Screen wash for oil base inks, gal
-----------------	------------------------------------

NAZ-DAR/KC



NAZ-DAR/KC

5500 Series Flat Poster Screen Inks

Flat Poster Screen Inks are general purpose, flat finish poster inks for printing paper, posters, point of purchase displays and posters.

Drying: solvent evaporation, air-dry 20-30 minutes or jet-dry in seconds.

Opacity: excellent

Thinners, Additives: 5500 Thinner or mineral spirits; 5550 Retarder; 5560 Fast Thinner or SC-100; 5530 Transparent Base for economy, transparencies or fine detail printing; 5536 Extender Base for higher mileage; 5549 Binder Varnish to improve adhesion and rub resistance on absorbent surfaces.

Fabrics: all types

Stencils: all types

Wash-up: 2555 Screen Wash or mineral spirits.

FLAT POSTER INK, QUART [51]

NAZ-5501Q	Primrose Yellow
NAZ-5502Q	Light Chrome Yellow
NAZ-5504Q	Sign Red
NAZ-5505Q	Burgundy Red
NAZ-5508Q	Radiant Ultra-Blue
NAZ-5509Q	Midnight Blue
NAZ-5510Q	Cerulean Blue
NAZ-5511Q	Black
NAZ-5512Q	Opaque White
NAZ-5513Q	Yellow Ochre
NAZ-5514Q	Emerald Green
NAZ-5515Q	Cobalt Blue
NAZ-5516Q	Dark Green
NAZ-5518Q	Medium Yellow
NAZ-5520Q	Fire Red
NAZ-5521Q	Rich Brown
NAZ-5525Q	Cyanine Green
NAZ-5526Q	Super Maroon
NAZ-5527Q	Bright Cerise
NAZ-5528Q	Bright Magenta
NAZ-5533Q	Brilliant Light Orange
NAZ-5544Q	Scarlet Red
NAZ-5546Q	Carmine Red
NAZ-5547Q	Dark Royal Purple
NAZ-5554Q	Peacock Blue
NAZ-5555Q	Bright Red
NAZ-5557Q	Raw Umber
NAZ-5558Q	Raw Sienna
NAZ-5561Q	Brilliant Pale Gold
NAZ-5570Q	Bronze Liquid

FLAT POSTER INK GALLON [51]

NAZ-5501G	Primrose Yellow
NAZ-5508G	Radiant Ultra-Blue
NAZ-5511G	Black
NAZ-5512G	White
NAZ-5521G	Rich Brown
NAZ-5544G	Scarlet Red

FLAT POSTER INK 5 GALLON [51]

NAZ-5512-5G	White
NAZ-5521-5G	Brown

FLAT POSTER INK MODIFIERS [58]

NAZ-5500G	Thinner, gal
NAZ-5500-5G	Thinner, 5 gal
NAZ-5560Q	Fast thinner, qt
NAZ-5560G	Fast thinner, gal
NAZ-5560-5G	Fast thinner, 5 gal
NAZ-5550Q	Retarder, qt
NAZ-5550G	Retarder, gal

9700 Series All-Purpose Screen Inks

All-Purpose Screen Inks for applications on plastics, paper, cardboard, pressure sensitive film and precoated metal. They produce a high gloss, tough flexible film suitable for vacuum forming. The pigments used in the inks have been selected to ensure maximum exterior durability

Substrates: styrene, ABS, acetate, C.A.B., vinyl sheet and pressure sensitive film, acrylic, coated metal, artcor, paper and board.

Drying: 15-20 min at normal room temperature. Force dry in seconds at 90-150° F

Opacity: all are opaque except Toners, PB's & halftones, which are transparent

Thinner: when extremely hot use 9731 Retarder.

Clears/Additives: 9727 Clear is used for overprinting and as a metallic mixing clear and to reduce the opacity of colors. When using silver powder, use .5-.75 lbs to a gallon of clear and approximately 1.5 lbs of bronze powder.

Fabric: 200 mesh monofilament or finer. Use 305-355 mesh for halftone printing.

Stencil: photographic or water soluble hand cut film.

Wash-up: lacquer solvent.

QUART

NAZ-KC-AP-9710Q	Primrose Yellow
NAZ-KC-AP-9711Q	Lemon Yellow
NAZ-KC-AP-9712Q	Medium Yellow
NAZ-KC-AP-9713Q	Emerald Green
NAZ-KC-AP-9718Q	Scarlet Red
NAZ-KC-AP-9719Q	Fire Red
NAZ-KC-AP-9720Q	Brilliant Orange
NAZ-KC-AP-9721Q	Peacock Blue
NAZ-KC-AP-9722Q	Ultra-Blue
NAZ-KC-AP-9724Q	Black
NAZ-KC-AP-9758Q	Tinting White
NAZ-KC-AP-9775Q	Super Opaque White
NAZ-KC-AP-9780Q	Yellow Toner
NAZ-KC-AP-9781Q	Orange Toner
NAZ-KC-AP-9782Q	Carmine Toner
NAZ-KC-AP-9783Q	Magenta Toner
NAZ-KC-AP-9784Q	Maroon Toner
NAZ-KC-AP-9785Q	Green Toner
NAZ-KC-AP-9786Q	Blue Toner GS
NAZ-KC-AP-9787Q	Blue Toner RS
NAZ-KC-AP-9788Q	Violet Toner
NAZ-KC-AP-9789Q	Red Toner
NAZ-KC-AP-9790Q	Yellow Oxide Toner
NAZ-KC-AP-97PB-10Q	Transp. Primrose Yellow
NAZ-KC-AP-97PB-12Q	Transp. Med. Yellow
NAZ-KC-AP-97PB-13Q	Transp. Green
NAZ-KC-AP-97PB-18Q	Transp. Red
NAZ-KC-AP-97PB-20Q	Transp. Orange
NAZ-KC-AP-97PB-22Q	Transp. Blue
NAZ-KC-AP-97PB-28Q	Transp. Gold
NAZ-KC-AP-97PB-60Q	Stop Sign Red
NAZ-KC-AP-97-HTBKQ	Halftone Black
NAZ-KC-AP-97-HTBQ	Halftone Blue
NAZ-KC-AP-97-HTEXQ	Halftone Extender Base
NAZ-KC-AP-97-HTRQ	Halftone Red
NAZ-KC-AP-97-HTYQ	Halftone Yellow

CLEAR

NAZ-KC-AP-9727Q	Mixing/overprint clear, qt
-----------------------	----------------------------



70-000 Series CoroGloss Screen Ink

Colorgloss is a gloss solvent-based screen ink for fluted corrugated plastic sheets manufactured from co-polymer resins. Excellent scuff resistance and dry to a good, even gloss finish with excellent adhesion and water resistance to fully treated surfaces.

Applications: point of purchase displays, signs, truck backs, and packaging.

Drying: air dry 20-40 min. Jet dry (max 130° F) in seconds.

Opacity: good

Fabrics: monofilament meshes 200 and up

Stencils: direct or direct-indirect emulsions, indirect film or water soluble knife-cut

Cleaning: 2555 Screen Wash or xylol

QUART

NAZ-79-102Q	Fire Red
NAZ-79-103Q	Scarlet Red
NAZ-79-111Q	Black
NAZ-79-112Q	White
NAZ-79-124Q	Orange
NAZ-79-130Q	Primrose Yellow
NAZ-79-132Q	Lemon Yellow
NAZ-79-134Q	Medium Yellow
NAZ-79-142Q	Emerald Green
NAZ-79-152Q	Peacock Blue
NAZ-79-156Q	Ultra Blue
NAZ-79-170Q	Clea



6100 Series Fast Dry Enamel

Fast Dry Enamel Ink is a high gloss, synthetic enamel solvent-based ink with an expanded color range to meet today's environmental requirements. It is used on flame-treated polyethylene containers, fiber drums and other hard-to-adhere-to surfaces. It also features a built-in catalyst that accelerates curing and resistance to soaps and detergents.

Substrates: fiber drums and treated polyethylene containers.

Mesh: 200-305 monofilament polyester.

Stencil: direct or indirect photo stencils.

Squeegee: sharp edge, 60-70 durometer blade.

Drying: air dry 30-60 min. Force dry/temperature 5 min.. at 180° F.

Clean Up: 2555 Screen Wash.

QUART

NAZ-6110Q	Primrose Yellow
NAZ-6111Q	Lemon Yellow
NAZ-6112Q	Medium Yellow
NAZ-6119Q	Fire Red
NAZ-6120Q	Brilliant Orange
NAZ-6121Q	Peacock Blue
NAZ-6122Q	Ultra Blue
NAZ-6152Q	Super Opaque Black
NAZ-6160Q	Orange
NAZ-6165Q	Purple
NAZ-6169Q	Green
NAZ-6175Q	Super Opaque White



MODIFIERS

NAZ-6127Q	Overprint Clear, qt
NAZ-6127G	Overprint Clear, gal





Screen Printing

INKS

Plastic Plus Gloss Vinyl Screen Inks



Plastic Plus Gloss Vinyl Screen Inks are for screen printing on a variety of vinyl, vinyl coated surfaces and plastics where a high gloss finish is required. The inks will form a positive bond with most plastic surfaces and will dry to an extremely flexible film which may be vacuum formed. The pigments have been selected for maximum exterior durability.

Substrates: pressure sensitive vinyl films, rigid vinyl,

most top coated or treated polyester and most plastics including acrylics, cellulose acetate butyrate, styrene and polycarbonate.

Drying: air dry 15-20 minutes, force dry at 90-150° F in seconds.

Clears/Extenders/Additives: PP-27 Overprint Clear (for overprint only). PP-26 Mixing Clear may be used to reduce color strength or as a metallic mixing varnish (use 1.5 lbs of gold bronze powder per gallon or .5-.75 lbs of aluminum powder per gallon).

Fabrics: 200 and finer monofilament meshes.

Stencils: photographic or water soluble hand cut film.

Cleaning: SW-37 Universal Screen Wash

QUART [51]

NAZ-PP-10Q	Primrose Yellow
NAZ-PP-11Q	Lemon Yellow
NAZ-PP-12Q	Medium Yellow
NAZ-PP-13Q	Emerald Green
NAZ-PP-14Q	Medium Green
NAZ-PP-18Q	Scarlet Red
NAZ-PP-19Q	Fire Red
NAZ-PP-20Q	Brilliant Orange
NAZ-PP-21Q	Peacock Blue
NAZ-PP-22Q	Ultra Blue
NAZ-PP-24Q	Black
NAZ-PP-25Q	Tinting White

9600 Series Polyester Screen Inks

Print untreated polyester films with Polyester Screen Inks. They will dry to a film exhibiting good gloss and flexibility. The pigments used in these inks have been carefully selected for light fastness and are not recommended for extended outdoor exposure.

Substrates: untreated polyester, rubber, polycarbonate, melamine plastics, leather, some coated and uncoated metals, polyester coated surfaces and some treated or top coated polyester films.

Drying: air dry 20-40 minutes, force dried at 90-150°F in seconds.

Clears/Extenders/Additives: 9627 may be used to reduce color strength or as a metallic mixing varnish (use approximately 1.5 lbs of gold bronze powder per gallon).

Fabrics: 200 and finer monofilament meshes.

Stencils: photographic.

NAZ-PP-50Q	Barrier White
NAZ-PP-52Q	Opaque Black
NAZ-PP-58Q	White Opaque
NAZ-PP-59Q	Black
NAZ-PP-62Q	Warm Red
NAZ-PP-64Q	Rhodamine Red
NAZ-PP-65Q	Purple
NAZ-PP-67Q	Reflex Blue
NAZ-PP-68Q	Process Blue
NAZ-PP-69Q	Green
NAZ-PP-75Q	Super Opaque White
NAZ-PP-410Q	Yellow
NAZ-PP-417Q	Rubine Red
NAZ-PP-433Q	Purple
NAZ-PP-441Q	Green
NAZ-PPPB-10Q	Transparent Primrose Yellow
NAZ-PPPB-12Q	Transparent Medium Yellow
NAZ-PPPB-13Q	Transparent Green
NAZ-PPPB-18Q	Transparent Red
NAZ-PPPB-20Q	Transparent Orange
NAZ-PPPB-22Q	Transparent Blue
NAZ-PPPB-28Q	Transparent Gold
NAZ-PPPB-33Q	Transparent Purple
NAZ-PPPB-60Q	Stop Sign Red
NAZ-PP-HTBKQ	Halftone Black
NAZ-PP-HTBQ	Halftone Blue
NAZ-PP-HTEXQ	Halftone Extender Base
NAZ-PP-HTRQ	Halftone Red
NAZ-PP-HTYQ	Halftone Yellow

GALLON [51]

NAZ-PP-19G	Fire Red
NAZ-PP-21G	Peacock Blue
NAZ-PP-24G	Black
NAZ-PP-25G	White
NAZ-PP-411G	Warm Red
NAZ-PP-417G	Rubine Red
NAZ-PP-418G	Rhodamine Red
NAZ-PP-422G	Reflex Blue
NAZ-PP-433G	Purple
NAZ-PP-440G	Process Blue
NAZ-PP-441G	Green

MODIFIERS [51]

NAZ-PP-26Q	Mixing Clear, reduces color strength or as a metallic mixing varnish, qt
NAZ-PP-27Q	Overprint Clear, for overprint only, qt

SCREEN WASH [58]

NAZ-SW-37G	Universal screen wash, gal
------------------	----------------------------



QUART [51]

NAZ-KC-9610Q	Primrose Yellow
NAZ-KC-9611Q	Lemon Yellow
NAZ-KC-9612Q	Medium Yellow
NAZ-KC-9613Q	Emerald Green
NAZ-KC-9614Q	Medium Green
NAZ-KC-9620Q	Brilliant Orange
NAZ-KC-9621Q	Peacock Blue
NAZ-KC-9624Q	Black
NAZ-KC-9625Q	White

CLEAR [51]

NAZ-KC-9627Q	Mixing/Overprint Clear, qt
--------------------	----------------------------





Point of Purchase Ink 70000 Series Plasti-Vac Gloss

Modified acrylic lacquers general purpose plastic printing inks formulated to reduce static problems often encountered with acrylic inks.

All pigments have been carefully chosen to ensure bleed resistance and good light fastness.

Use these inks for vacuum forming with deep draw. Check to determine the suitability for the depth of draw desired. Adhesion and gloss are normally improved by vacuum forming.

QUART [511]

NAZ-70-111Q	Black
NAZ-70-104Q	Bright Red
NAZ-70-105Q	Permanent Red
NAZ-70-107Q	Transp. Maroon
NAZ-70-112Q	White
NAZ-70-114Q	Brown
NAZ-70-124Q	Orange
NAZ-70-130Q	Primrose Yellow
NAZ-70-134Q	Chrome Yellow
NAZ-70-139Q	Transp. Majestic Yellow
NAZ-70-142Q	Emerald Green
NAZ-70-148Q	Dark Green
NAZ-70-149Q	Transp. Green
NAZ-70-152Q	Light Blue
NAZ-70-157Q	Royal Blue
NAZ-70-159Q	Transp. Blue
NAZ-70-170Q	Clear
NAZ-70-185Q	Brilliant Pale Gold
NAZ-70-187Q	Silver



GALLON [511]

NAZ-70-112G	White
-------------	-------

MODIFIERS [511]

NAZ-70-180Q	Thinner, qt
NAZ-70-180G	Thinner, gal
NAZ-70-182Q	Retarder thinner, qt
NAZ-70-182G	Retarder thinner, gal
NAZ-SW-184-5G	Screen wash, 5 gal
NAZ-SW-184G	Screen wash, gal
NAZ-SW-184Q	Screen wash, qt

Phosphorescent Pigment

The classic "glow in the dark" or phosphorescent pigments consist of very fine crystals of zinc sulfide. Copper is added to the zinc sulfide as an activator. This allows the crystals to absorb light and slowly emit it over time. The slow emission is called phosphorescence.

6SSU is the basic phosphorescent pigment. This material has a light yellow (natural) body color and a yellowish green afterglow. It is designed to give the brightest and longest afterglow.

UMC phosphorescent pigments may be used in all types of paint, powder coatings, silkscreen inks, enamel and plastics.

- Warning and exit signs
- Fire fighting & mining safety gear
- Silkscreen printing on textiles & posters
- Toys and novelties • Fishing Lures

These pigments are not recommended for prolonged outdoor applications. Sunlight and weather will cause the pigment to slowly decompose.

PHOSPHORESCENT POWDER [610]

SUM-6SSU PHOS LB	Phosphorescent powder, mixed with ink ads a 20 hour afterglow 20 micron
------------------	---

Universal Flattening Powder

Mixed into any gloss color or clear ink, 1% to 5% reduces the original gloss to satin or flat. Use a power mixer for good dispersion.

UNIVERSAL FLATTENING POWDER [511]

NAZ-SIPI-413 LB	Flattening powder for screening ink, 1 lb
-----------------	---



ER Series Epoxy Resin Screen Inks

ER Series Epoxy Resin Screen Inks are a two-phase epoxy ink characterized by a high degree of adhesion to a variety of "difficult" surfaces such as ceramics, phenolics, polyesters, melamines, silicones, ferrous and non-ferrous metals and glass. It exhibits excellent resistance to solvents and chemicals.

Substrates: phenolics, polyesters, melamine, silicone, ferrous and non-ferrous metals, ceramics, and glass.

Drying: by polymerization. These inks require the addition of a catalyst immediately prior to use. Air dry from 2-3 hours but 7-10 days are required for maximum adhesion and chemical resistance.

Curing: 180° F for 30 minutes, 250° F for 10 minutes, 300° F for 7 minutes, 350° F for 4 minutes

Opacity: excellent

Thinners: RE-180 Thinner or butyl cellosolve, RE-182 Retarder

Additives: ER-176 Catalyst, ER-177 Catalyst for Gold, ER-170 Gloss Clear

Fabrics: all Types

Stencils: photographic (direct or indirect) or water soluble hand cut films.

Cleaning: RE-180 Thinner or butyl cellosolve

MODIFIERS [511]

NAZ-RE-180Q	Thinner, qt
NAZ-RE-180G	Thinner, gal
NAZ-RE-182Q	Thinner retarder, qt
NAZ-RE-182G	Thinner retarder, gal
NAZ-RE-182-5G	Thinner retarder, 5 gal
NAZ-RE-183Q	Retarder, qt





44-000 Series Fast Dry Gloss Vinyl Screen Inks

Fast Dry Gloss Vinyl Screen Inks may be used on a variety of vinyl and vinyl coated surfaces. They will form a positive bond with substrates and produce a high gloss finish which may be vacuum-formed. Most colors are for extended outdoor use and suitable for thermo-diecutting.

Substrates: pressure-sensitive vinyl films and vinyl coated.

Drying: air-dry in two to five minutes, without drying in the screen; jet-dry at 90-120° F in seconds.

Thinners: inks must be thinned with approximately 15-20% of 44-180 Thinner or 44-182 Retarder.

Fabrics: Monofilament meshes 200 and finer.

Stencils: Photographic or water-soluble knife-cut film.

Wash-up: VF-184 Screen Wash

QUART [51]

NAZ-44-111Q	Black
NAZ-44-152Q	Light Blue
NAZ-44-157Q	Royal Blue
NAZ-44-156Q	Ultra Blue
NAZ-44-114Q	Brown
NAZ-44-170Q	Clear
NAZ-44-142Q	Emerald Green
NAZ-44-148Q	Dark Green
NAZ-44-108Q	Maroon
NAZ-44-124Q	Orange
NAZ-44-162Q	Purple
NAZ-44-106Q	Carmine Red
NAZ-44-102Q	Fire Red
NAZ-44-105Q	Permanent Red
NAZ-44-122Q	Opaque White
NAZ-44-112Q	White
NAZ-44-134Q	Chrome Yellow
NAZ-44-132Q	Lemon Yellow
NAZ-44-130Q	Primrose Yellow
NAZ-44-164Q	Cerise

GALLON [51]

NAZ-44-111G	Black
NAZ-44-152G	Light Blue
NAZ-44-170G	Clear
NAZ-44-112G	White
NAZ-44-132G	Lemon Yellow

Halftone Gloss Vinyl Inks

QUART [51]

NAZ-44-178Q	Halftone Base
NAZ-44-167Q	Halftone Blue
NAZ-44-169Q	Halftone Magenta
NAZ-44-168Q	Halftone Yellow

MODIFIERS [58]

NAZ-44-180Q	Thinner, qt
NAZ-44-180G	Thinner, gal
NAZ-44-182Q	Retarder, qt
NAZ-44-182G	Retarder, gal

GV Gloss Vinyl Screen Ink

For printing on vinyl surfaces with a high gloss finish. These inks form a positive bond with most vinyl surfaces and will dry to an extremely flexible film which may be vacuum formed and do well outdoors.

Substrates: pressure-sensitive vinyl films, vinyl coated products, vacuum formed vinyl plastics, cellulose acetate, cellulose acetate butyrate, vacuum formed displays.

Drying: air dry in 20-40 minutes.

Opacity: semi-opaque, GV-110, 139, 149 and 159 or transparent in color.

Thinners: VF-180 Vinyl Thinner, VF-182 Vinyl Retarder

Additives: GV-170 Clear for varying degrees of transparency (also metallic clear). Not recommended for exterior exposure. VF-178 Sharp Printing Compound (will slightly reduce gloss).

Fabrics: all types

Stencils: photographic or water-soluble knife-cut film

Cleaning: VF-184 Screen Wash

QUART [51]

NAZ-GV-103Q	Red
NAZ-GV-105Q	Permanent Red
NAZ-GV-107Q	Permanent Maroon
NAZ-GV-110Q	Transparent Red
NAZ-GV-111Q	Black
NAZ-GV-112Q	White
NAZ-GV-113Q	Light Brown
NAZ-GV-122Q	Opaque White
NAZ-GV-124Q	Orange
NAZ-GV-130Q	Primrose Yellow
NAZ-GV-132Q	Lemon Yellow
NAZ-GV-134Q	Chrome Yellow
NAZ-GV-139Q	Majestic Yellow
NAZ-GV-142Q	Emerald Green
NAZ-GV-143Q	Dark Green
NAZ-GV-149Q	Permanent Green
NAZ-GV-152Q	Permanent Light Blue
NAZ-GV-157Q	Royal Blue
NAZ-GV-159Q	Permanent Blue
NAZ-GV-162Q	Purple
NAZ-GV-164Q	Cerise
NAZ-GV-170Q	Clear Gloss
NAZ-GV-173Q	Clear Gloss Exterior
NAZ-GV-185Q	Pale Gold
NAZ-GV-187Q	Silver

GALLON [51]

NAZ-GV-111G	Black
NAZ-GV-112-G	White
NAZ-GV-122G	Opaque White
NAZ-GV-130G	Primrose Yellow
NAZ-GV-142G	Emerald Green
NAZ-GV-157G	Royal Blue
NAZ-GV-170G	Clear

MODIFIERS [58]

NAZ-VF-180Q	Vinyl thinner, qt
NAZ-VF-180G	Vinyl thinner, gal
NAZ-VF-180-5G	Vinyl thinner, 5 gal
NAZ-VF-182Q	Vinyl retarder thinner, qt
NAZ-VF-182G	Vinyl retarder thinner, gal
NAZ-VF-184G	Vinyl screenwash, gal
NAZ-VF-184-5G	Vinyl screenwash, 5 gal

VF Flat Vinyl Screen Ink

Flat Vinyl Screen Inks are formulated to fuse with vinyl surfaces. They have good printability and will dry to a film as flexible as the vinyl surface itself. All colors except for VF-111 Black may be heat sealed. A special non-arcing black for heat sealing is available by special order.

Substrates: rigid and flexible vinyl plastics, some vinyl coatings, novelties, inflatables, vinyl wall coverings, vinyl book covers.

Drying: solvent evaporation, air dry in 20-40 minutes, jet-dry in seconds.

Opacity: excellent.

Thinners: VF-190 Thinner, VF-192 Retarder.

Additives: VF-175 Vinyl Extender for economical purposes. VF-178 Sharp Printing Compound for printing fine detail and halftones on textured surfaces.

Fabrics: all types.

Stencils: photographic or water-soluble hand cut film.

Cleaning: VF-192 Vinyl Thinner.

QUART [51]

NAZ-VF-103Q	Brilliant Red
NAZ-VF-104Q	Bright Red
NAZ-VF-105Q	Cadmium Red
NAZ-VF-111Q	Black
NAZ-VF-112Q	White
NAZ-VF-114Q	Medium Brown
NAZ-VF-122Q	Opaque White
NAZ-VF-124Q	Medium Orange
NAZ-VF-130Q	Primrose Yellow
NAZ-VF-134Q	Chrome Yellow
NAZ-VF-146Q	Cyanine Green
NAZ-VF-148Q	Dark Green
NAZ-VF-152Q	Light Blue
NAZ-VF-156Q	Brilliant Ultra-Blue
NAZ-VF-159Q	Permanent Blue
NAZ-VF-164Q	Cerise
NAZ-VF-170Q	Clear

GALLON [51]

NAZ-VF-112G	White
NAZ-VF-122G	Opaque White
NAZ-VF-152G	Light Blue
NAZ-VF-156G	Brilliant Ultra-Blue

MODIFIERS [51]

NAZ-VF-175Q	Extender
NAZ-VF-178Q	Sharp Printing Compound

MODIFIERS [58]

NAZ-VF-190G	Thinner, gal
NAZ-VF-192Q	Retarder, qt
NAZ-VF-192G	Retarder, gal





59000 Enamel Plus Gloss Screen Ink

Enamel Plus Gloss Screen Inks are regular and halftone inks with excellent outdoor durability that dry to an extremely flexible and glossy finish. These inks have excellent adhesion to a great variety of surfaces and are ideal for printing both solid coat-outs as well as fine details.

Substrates: metal, wood, masonite, glass, anodized aluminum, paper, cardboard, some types of plastics, outdoor signs and displays, novelties, synthetic decals, packaging containers.

Drying: air-dry four to six hours. Cure at 180° F for 30 minutes

Opacity: excellent (halftone inks are transparent)

Thinners: 59-000 Mixing Varnish (use to obtain roller-coating consistency)

Additives: for over-printing, use 59-135 Gloss Synthetic Coating Varnish or 59-172 Flat Synthetic Coating Varnish. Over-printing these inks with 59-135 Gloss Synthetic Coating Varnish will produce maximum durability and may

also be roller-coated and used as a bronzing vehicle.

Fabrics: all types **Stencils:** all types

Wash-up: 2555 Screen Wash or mineral spirits

QUART	[51]
NAZ-59-102Q	Fire Red
NAZ-59-106Q	Scarlet Red
NAZ-59-111Q	Black
NAZ-59-112Q	White
NAZ-59-114Q	Medium Brown
NAZ-59-122Q	Super Opaque White
NAZ-59-124Q	Brilliant Orange
NAZ-59-130Q	Primrose Yellow
NAZ-59-132Q	Lemon Yellow
NAZ-59-134Q	Chrome Yellow
NAZ-59-142Q	Emerald Green
NAZ-59-148Q	Medium Green
NAZ-59-152Q	Peacock Blue
NAZ-59-156Q	Ultra Blue Enamel
NAZ-59-158Q	Dark Blue
NAZ-59-166Q	Halftone Black
NAZ-59-167Q	Halftone Blue
NAZ-59-168Q	Halftone Yellow
NAZ-59-169Q	Halftone Magenta
NAZ-59-170Q	Halftone Clear
NAZ-59-191Q	Flat Black
NAZ-59-192Q	Flat White
NAZ-59-204Q	Lead Free Bright Red
NAZ-59-230Q	Lead Free Primrose Yellow
NAZ-59-234Q	Lead Free Medium Yellow
NAZ-59-410Q	Yellow
NAZ-59-417Q	Rubine Red
NAZ-59-418Q	Rhodamine Red
NAZ-59-422Q	Reflex Blue
NAZ-59-433Q	Purple

NAZ-59-440Q	Process Blue
NAZ-59-441Q	Green
NAZ-59-610Q	Trans Primrose Yellow
NAZ-59-612Q	Trans Medium Yellow
NAZ-59-613Q	Transparent Green
NAZ-59-618Q	Transparent Red
NAZ-59-620Q	Transparent Orange
NAZ-59-622Q	Transparent Blue
NAZ-59-633Q	Transparent Purple
NAZ-59-660Q	Stop Sign Red

GALLON	[51]
NAZ-59-102G	Fire Red
NAZ-59-111G	Black
NAZ-59-112G	White
NAZ-59-122G	Super Opaque White
NAZ-59-124G	Medium Orange
NAZ-59-132G	Lemon Yellow
NAZ-59-134G	Chrome Yellow
NAZ-59-191G	Flat Black
NAZ-59-192G	Flat White
NAZ-59-204G	Lead Free Bright Red
NAZ-59-410G	Yellow
NAZ-59-422G	Reflex Blue
NAZ-59-613G	Transparent Green
NAZ-59-622G	Transparent Blue
NAZ-59-633G	Transparent Purple
NAZ-59-660G	Stop Sign Red

CLEAR/EXTENDERS/ADDITIVES	[51]
NAZ-59-000Q	Mixing Varnish Gloss Enamel Synthetic, qt
NAZ-59-000G	Mixing Varnish Gloss Enamel Synthetic, gal
NAZ-59-118Q	Flattening paste, qt
NAZ-59-120Q	Base, qt
NAZ-59-120G	Base, gal
NAZ-59-135Q	Gloss Coating Varnish, qt
NAZ-59-135G	Gloss Coating Varnish, gal
NAZ-59-140Q	Overprint Clear, qt
NAZ-59-172Q	Flat Coating Varnish, qt

Textile Inks

DA Nylon and Flock Screen Inks - Air Dry

Nylon and Flock Screen Inks are opaque and extremely flexible elastic inks for printing and flocking most synthetic and natural textiles, including waterproof nylon and other synthetics having a finish. It is resistant to laundering, dry cleaning and ironing.

Mixing Instructions: two-part polymerizing system: all colors must be mixed with DA 176 Catalyst in proportion of 3.5 parts of color to at least one part of catalyst by weight.

Pot Life: the color/catalyst mixture is limited to 3-5 hours at temperatures from 60-75° F.

Finish: gloss

Drying: air-dry overnight, cures in seven days. Heat-curing at 300-325°F for seven to ten minutes.

Opacity: excellent, may be printed on black or dark colors.

Thinners: 44-180 Thinner, 44-182 Retarder

Cleaning: VF-184 Screen Wash

Fabric: 8XX multifilament or 200 mesh monofilament.

Stencils: direct emulsions, photographic stencils or water soluble knife-cut film.

QUART	[51]
NAZ-DA-104Q	Bright Red
NAZ-DA-111Q	Black
NAZ-DA-112Q	White
NAZ-DA-124Q	Orange
NAZ-DA-134Q	Medium Chrome Yellow
NAZ-DA-142Q	Emerald Green
NAZ-DA-152Q	Light Blue
NAZ-DA-156Q	Brilliant Blue

MODIFIERS	[51]
NAZ-DA-176HP	Catalyst, half-pint
NAZ-DA-176Q	Catalyst, qt



Color Book

COLOR BOOK	[604]
NAZ-9 PANTONE...	PMS Pantone Matching System Color Mixing Guide for NazDar inks.

Speedball® Night Glo™ Textile Inks

- Can be screen printed or brushed on
- Waterbased, non-toxic & non-flammable
- Inks exhibit high initial brightness and afterglow up to 8 hours in darkened areas



PHOTOLUMINESCENT INK, 8 OZ	[606]
SSB 47521...	Luminescent textile ink, yellow
SSB 47523...	Luminescent textile ink, white

PHOTOLUMINESCENT INK, 8 OZ	[51]
NAZ-BONDQ.	Bonds plastisol inks to nylon fabric additive, quart

NAZDAR



Screen Printing

INKS

Perma-Flex Flock Adhesive



PX Series Perma-Flex Flock Adhesive Air Dry Inks

Perma-Flex Flock Adhesive Screen Inks are pigmented adhesives for flocking applications on textile materials. These inks may be printed direct from the container or with minimal thinning. Their excellent opacity and "short" body allow ease in achieving a thick adhesive deposit for flocking. It may be used as an opaque, direct printing ink without flocking.

Substrates: cotton, cotton blends, some synthetic materials for awnings, beach bags, T-shirts, banners and ribbons

Drying: air dry overnight

Opacity: opaque, suitable for printing on dark background

Thinners: PX-30 Thinner or mineral spirits

Fabrics: 6-8XX multifilament or 85-110 monofilament meshes.

Stencils: all types

Cleaning: mineral spirits



QUART

[51]

NAZ-PX-110Q	Yellow PX series Perma-Flex Flock adhesive ink
NAZ-PX-130Q	Orange PX series Perma-Flex Flock adhesive ink
NAZ-PX-150Q	Dark Green PX series Perma-Flex Flock adhesive ink
NAZ-PX-160Q	Brown PX series Perma-Flex Flock adhesive ink
NAZ-PX-180Q	Scarlet Red PX series Perma-Flex Flock adhesive ink
NAZ-PX-190Q	Fire Red PX series Perma-Flex Flock adhesive ink
NAZ-PX-210Q	Royal Blue PX series Perma-Flex Flock adhesive ink
NAZ-PX-230Q	Navy PX series Perma-Flex Flock adhesive ink
NAZ-PX-240Q	Black PX series Perma-Flex Flock adhesive ink
NAZ-PX-250Q	White PX series Perma-Flex Flock adhesive ink
NAZ-PX-320Q	Gold PX series Perma-Flex Flock adhesive ink
NAZ-PX-330Q	Green PX series Perma-Flex Flock adhesive ink
NAZ-PX-750Q	White Super Opaque PX series Perma-Flex Flock

GALLON

[51]

NAZ-PX-130G	Orange PX series Perma-Flex Flock adhesive ink
NAZ-PX-180G	Scarlet Red PX series Perma-Flex Flock adhesive ink
NAZ-PX-190G	Fire Red PX series Perma-Flex Flock adhesive ink
NAZ-PX-210G	Royal Blue PX series Perma-Flex Flock adhesive ink
NAZ-PX-230G	Opaque Navy PX series Perma-Flex Flock adhesive ink
NAZ-PX-240G	Black PX series Perma-Flex Flock adhesive ink
NAZ-PX-250G	White PX series Perma-Flex Flock adhesive ink
NAZ-PX-320G	Gold PX series Perma-Flex Flock adhesive ink
NAZ-PX-330G	Kelly Green PX series Perma-Flex Flock adhesive ink
NAZ-PX-750G	White Super Opaque PX series Perma-Flex Flock

MODIFIERS

[58]

NAZ-PX-30Q	Thinner, qt
NAZ-PX-30G	Thinner, gal

Advanced Color Texprint RFU Prepared Waterbase Colors

Texprint **Ready For Use Printing Color (RFU)** products are all aqueous printing pastes that are prepared for printing and curing on textile goods leaving good fastness to wash and crock in deep, and wide range of colors.

Texprint **Ready For Use Opaque Color** products are all aqueous printing pastes that are prepared for opaque printing and curing on colored textile goods leaving good fastness to wash and crock in bright shades for maximum contrast between the fabric color and the pigment.

Texprint Prepared Colors are **ready for use water based colors for printing on white to light colored cottons and cotton blends, including fleece and terry cloth.** For printing on medium to dark backgrounds use a Texprint White.

Prepared colors can be used with a 40 to 300 monofilament mesh for most applications. To modify the prepared colors add Extender TC-2 to lighten the shade, Bond All III to improve washfastness, Low Temp, Catalyst A for shorter or lower curing times and Polypen G for improved penetration.

ADVANCED Color & Chemical Corporation

QUART

[45]

SADV-CADBLACK-Q	Black N-T
SADV-N2GBLUE-Q	Blue N-2G
SADV-N3GBLUE-Q	Blue N-3G
SADV-NJSBLUE-Q	Blue N-JS
SADV-NNAVYBLUE-Q	Navy Blue N
SADV-NRRBLUE-Q	Royal Blue N-R
SADV-NBBROWN-Q	Brown N-G
SADV-NKBROWN-Q	Brown N-K
SADV-NYBROWN-Q	Brown N-Y
SADV-NFEFUCHSIA-Q	Fuchsia N-F
SADV-NBGREEN-Q	Green N-BG
SADV-NOGREEN-Q	Green N-O
SADV-NNGREY-Q	Grey N-N
SADV-NRORANGE-Q	Orange N-R
SADV-N3BRED-Q	Red N-3B
SADV-NBRED-Q	Red N-B
SADV-NRRUBINE-Q	Rubine N-R
SADV-NASCARLET-Q	Scarlet N-A
SADV-NHSCARLET-Q	Scarlet N-HS
SADV-NVTURQ-Q	Turquoise N-V
SADV-N4BVIOLET-Q	Violet N-4B
SADV-N2GYELLOW-Q	Yellow N-2G
SADV-N3GYELLOW-Q	Yellow N-3G
SADV-NVYELLOW-Q	Yellow N-V

GALLON

[45]

SADV-CADBLACK-G	Black N-T
SADV-N2GBLUE-G	Blue N-2G
SADV-N3GBLUE-G	Blue N-3G
SADV-NJSBLUE-G	Blue N-JS
SADV-NNAVYBLUE-G	Navy Blue N
SADV-NRRBLUE-G	Royal Blue N-R
SADV-NBBROWN-G	Brown N-B
SADV-NKBROWN-G	Brown N-K
SADV-NYBROWN-G	Brown N-Y
SADV-NFEFUCHSIA-G	Fuchsia N-F
SADV-NBGREEN-G	Green N-BG
SADV-NOGREEN-G	Green N-O
SADV-NNGREY-G	Grey N-N

SADV-NRORANGE-G	Orange N-R
SADV-N3BRED-G	Red N-3B
SADV-NBRED-G	Red N-B
SADV-NRRUBINE-G	Rubine N-R
SADV-NASCARLET-G	Scarlet N-A
SADV-NHSCARLET-G	Scarlet N-HS
SADV-NVTURQ-G	Turquoise N-V
SADV-N4BVIOLET-G	Violet N-4B
SADV-N2GYELLOW-G	Yellow N-2G
SADV-N3GYELLOW-G	Yellow N-3G
SADV-NVYELLOW-G	Yellow N-V

5 GALLON

[45]

SADV-CADBLACK-5G	Black N-T
SADV-N2GBLUE-5G	Blue N-2G
SADV-N3GBLUE-5G	Blue N-3G
SADV-NNAVYBLUE-5G	Navy Blue N
SADV-NJSBLUE-5G	Blue N-JS
SADV-NRRBLUE-5G	Royal Blue N-R
SADV-NBBROWN-5G	Brown N-G
SADV-NKBROWN-5G	Brown N-K
SADV-NFEFUCHSIA-5G	Fuchsia N-F
SADV-NBGREEN-5G	Green N-BG
SADV-NOGREEN-5G	Green N-O
SADV-NNGREY-5G	Grey N-N
SADV-NRORANGE-5G	Orange N-R
SADV-N3BRED-5G	Red N-3B
SADV-NBRED-5G	Red N-B
SADV-NRRUBINE-5G	Rubine N-R
SADV-NASCARLET-5G	Scarlet N-A
SADV-NHSCARLET-5G	Scarlet N-HS
SADV-NVTURQ-5G	Turquoise N-V
SADV-N4BVIOLET-5G	Violet N-4B
SADV-N2GYELLOW-5G	Yellow N-2G
SADV-N3GYELLOW-5G	Yellow N-3G
SADV-NVYELLOW-5G	Yellow N-V





Prepared RFU Fluorescent Colors

QUART	[45]
SADV-FLORED-Q..... Fluor. Red	
GALLON	[45]
SADV-FLOBLUE-G..... Fluor. Blue	
SADV-FLOGREEN-G..... Fluor. Green	
SADV-FLOPINK-G..... Fluor. Pink	
SADV-FLORANGE-G..... Fluor. Orange	
SADV-FLORED-G..... Fluor. Red	

Texprint Waterbase Whites: First Downs and Mixers White 6144

Non-ionic, rutile, blue/white high concentrate ink for good hiding characteristics.

WHITE 6144	[45]
SADV-6144WHITE-Q..... Quart	
SADV-6144WHITE-G..... Gallon	
SADV-6144WHITE-5G..... 5 gal	

Mixing White RT

Ultra strong pigment white slurry that must be reduced with printing clears, binders and lubricants. A fine particulate white used to tint formulas requiring additional white.

MIXING WHITE RT	[45]
SADV-PC-RTWHITE-Q..... Quart	
SADV-PC-RTWHITE-G..... Gallon	

C-Series Waterbase Printing Pigments

Texprint C-Series Pigments are non-ionic slurries that are approximately four times the strength of normal pigment products and can be used in textile, coating, and graphic arts industries.



Texprint C-Series aqueous concentrated printing pigments are manufactured with pure, unmodified presscake to give the colorist the ability to achieve clean shades of strong colors.

C-Series pigments can be used at concentrations from .10% to 15% with normal pigmentation in the range of 4% to 7%. Care should be taken when high levels of pigmentation are used regarding the correct amount of binding mechanism that is included within the print system.

Fastness testing and results are based on specific fabric and at .1% and 5% shade depths using AATCC procedures. Results will change when modifications are made to method, strength or substrate.

C-Series pigments are compatible with most all-aqueous, emulsion, garment dye and some pad dye systems and can be used in any equipment now in service.

MAGENTA C-F	[45]
SADV-PC-CFMAGENTA-Q..... Quart	
SADV-PC-CFMAGENTA-G..... Gallon	

ADVANCED
Color & Chemical
Corporation

RD3 White

RD3 WHITE OPAQUE FOR WATERBASE INK	[45]
SADV-RD3WHITE-Q..... Quart	
SADV-RD3WHITE-G..... Gallon	
SADV-RD3WHITE-5G..... 5 gal	

Textprint White RD IV

A water phase, blue/white textile pigment with an extremely high opacity on dark backgrounds. It can be printed as is or modified slightly for harder to print fabrics.

TEXPRINT WHITE RD IV	[45]
SADV-RD4WHITE-Q..... Quart	
SADV-RD4WHITE-G..... Gallon	
SADV-RD4WHITE-5G..... 5 gal	
SADV-RD4WHITE-30G..... 30 gal	

GW White

White GW needs light curing to give it a bluish, semi-gloss look. It reaches maximum curing after 48 hours.

GW WHITE	[45]
SADV-GWWHITE-5G..... 5 gal	
SADV-GWWHITE-30G..... 30 gal	
SADV-GWWHITE-55G..... 55 gal	

ADVANCED
Color & Chemical
Corporation

Texprint Waterbase Prepared Extenders

TC-2 is an all water phase pigment extender that imparts a soft hand, while maximizing wet and dry crock-fastness when cured properly.

It is compatible with most water phase pigments such as Texprint N Series and Texprint C Series Pigments.

It performs extremely well on cotton terry cloth, fleece and other soft-handed lyophilic fabrics.

A pre-print should be made and tested to determine if the system is compatible with your particular fabric and equipment.

TEXPRINT EXTENDER TC-2	[45]
SADV-TC2EXTENDER-5G..... 5 gal	
SADV-TC2EXTENDER-55G..... 55 gal	

pretest all product applications to ensure full proof results.

Polypen G

Polypen G is a penetrator and leveler for pigments. It improves prints while not affecting the physical characteristics of the ink.

POLYPEN G	[45]
SADV-POLYPEN-Q..... Polypen G, qt	
SADV-POLYPEN-G..... Polypen G, gal	
SADV-POLYPEN-5G..... Polypen G, 5 gal	

Screen Life Time Extender

Screen Life A is a printing additive that can be added to inks to extend the usable time that colors can be left on printing screens.

SCREEN LIFE A	[45]
SADV-SCREENLIFE-A-Q..... Time extender, qt	
SADV-SCREENLIFE-A-G..... Time extender, gal	



Texprint N-Series Pigments

Water-soluble, fine particle sized, general purpose textile printing pigments that meet or exceed the industry standards for strength and color value use in the textile industry.

"N" Colors must be mixed with a base such as Texprint Extender TC-2 before it can be applied to synthetic and natural fibers. To mix "N" Colors use the lowest ratio possible and as high as 1 part color per 4 parts of extender. Normal application for standard shades is approximately 1 part color per 10 parts extender (caution: when using large amounts of color be aware of print-through, bleeding and crocking). They may be applied with hand screens, automatic printing machines or hand and air brushes. "N" Colors have comparatively good fastness properties with variations from color to color (check fastness before use to insure crock, light and dry cleaning durability). "N" Colors are transparent and will show background color to some extent unless white or Blockout K is used with the system. If necessary, thin colors with water.

QUART

SADV-PC-NJBLACK-Q	Black N-J
SADV-PC-NTBLACK-Q	Black N-T
SADV-PC-N2GBLUE-Q	Blue N-2G
SADV-PC-N3GBLUE-Q	Blue N-3G
SADV-PC-NJSBLUE-Q	Blue N-JS
SADV-PC-NNAVYBLUE-Q	Navy Blue N
SADV-PC-NRRBLUE-Q	Royal Blue N-R
SADV-PC-NBBROWN-Q	Brown N-B
SADV-PC-NKBROWN-Q	Brown N-K
SADV-PC-NFEFUCHSIA-Q	Fuchsia N-FE
SADV-PC-NBGREEN-Q	Green N-BG
SADV-PC-NOGREEN-Q	Green N-O
SADV-PC-NNGREY-Q	Grey N-N
SADV-PC-NOLORANGE-Q	Orange N-OL
SADV-PC-NRORANGE-Q	Orange N-R
SADV-PC-NBRED-Q	Red N-B
SADV-PC-NRRUBINE-Q	Rubine N-R
SADV-PC-NASCARLET-Q	Scarlet N-A
SADV-PC-NDSCARLET-Q	Scarlet N-D
SADV-PC-NHSCARLET-Q	Scarlet N-HS
SADV-PC-NVTURQ-Q	Turquoise N-V
SADV-PC-N4BVIOLET-Q	Violet N-4B
SADV-PC-N2GYELLOW-Q	Yellow N-2G
SADV-PC-NVYELLOW-Q	Yellow N-V
SADV-PC-N3GYELLOW-Q	Yellow N-3G

[45]

SADV-PC-NOLORANGE-G ..	Orange N-OL
SADV-PC-NRORANGE-G ..	Orange N-R
SADV-PC-N3BRED-G	Red N-3B
SADV-PC-NBRED-G	Red N-B
SADV-PC-NRRUBINE-G ..	Rubine N-R
SADV-PC-NASCARLET-G ..	Scarlet N-A
SADV-PC-NDSCARLET-G ..	Scarlet N-D
SADV-PC-NHSCARLET-G ..	Scarlet N-HS
SADV-PC-NVTURQ-G	Turquoise N-V
SADV-PC-N4BVIOLET-G ..	Violet N-4B
SADV-PC-N2GYELLOW-G ..	Yellow N-2G
SADV-PC-NVYELLOW-G ..	Yellow N-V
SADV-PC-N3GYELLOW-G ..	Yellow N-3G

GALLON

SADV-PC-NJBLACK-G	Black N-J
SADV-PC-NTBLACK-G	Black N-T
SADV-PC-N2GBLUE-G	Blue N-2G
SADV-PC-N3GBLUE-G	Blue N-3G
SADV-PC-NJSBLUE-G	Blue N-JS
SADV-PC-NNAVYBLUE-G	Navy Blue N
SADV-PC-NRRBLUE-G	Royal Blue N-R
SADV-PC-NBBROWN-G	Brown N-B
SADV-PC-NKBROWN-G	Brown N-K
SADV-PC-NYBROWN-G	Brown N-Y
SADV-PC-NBGREEN-G	Green N-BG
SADV-PC-NOGREEN-G	Green N-O
SADV-PC-NNGREY-G	Grey N-N

[45]

5 GALLON

SADV-PC-NJBLACK-5G ..	Black N-J
SADV-PC-NTBLACK-5G ..	Black N-T
SADV-PC-N2GBLUE-5G ..	Blue N-2G
SADV-PC-N3GBLUE-5G ..	Blue N-3G
SADV-PC-NJSBLUE-5G ..	Blue N-JS
SADV-PC-NNAVYBLUE-5G ..	Navy Blue N
SADV-PC-NRRBLUE-5G ..	Royal Blue N-R
SADV-PC-NBBROWN-5G ..	Brown N-B
SADV-PC-NKBROWN-5G ..	Brown N-K
SADV-PC-NFEFUCHSI-5G ..	Fuchsia N-FE
SADV-PC-NBGREEN-5G ..	Green N-BG
SADV-PC-NOGREEN-5G ..	Green N-O
SADV-PC-NRORANGE-5G ..	Orange N-R
SADV-PC-N3BRED-5G	Red N-3B
SADV-PC-NBRED-5G	Red N-B
SADV-PC-NRRUBINE-5G ..	Rubine N-R
SADV-PC-N4BVIOLET-5G ..	Violet N-4B
SADV-PC-N2GYELLOW-5G ..	Yellow N-2G
SADV-PC-NVYELLOW-5G ..	Yellow N-V
SADV-PC-N3GYELLOW-5G ..	Yellow N-3G

[45]

ADVANCED
Color & Chemical
Corporation

Fluorescent Pigment Colors

Fluorescent Pigment Colors must be used with an extender such as TC-2 at a level of 1 part color per 6 parts extender for dark shades and 1 part color per 150 parts extender for light shades. The use of white pigment dispersion will help decrease color shift on colored fabrics.

QUART

SADV-PC-FLOBLUE-Q	Fluor. Blue FJ
SADV-PC-FLOGREEN-Q	Fluor. Green F
SADV-PC-FLORANGE-Q	Fluor. Orange
SADV-PC-FLOPINK-Q	Fluor. Pink
SADV-PC-FLORED-Q	Fluor. Red
SADV-PC-FLOVIOLET-Q	Fluor. Violet
SADV-PC-FLOYELLOW-Q	Fluor. Yellow

[45]

GALLON

SADV-PC-FLOBLUE-G	Fluor. Blue
SADV-PC-FLOGREEN-G	Fluor. Green
SADV-PC-FLORANGE-G	Fluor. Orange
SADV-PC-FLOPINK-G	Fluor. Pink
SADV-PC-FLORED-G	Fluor. Red
SADV-PC-FLOVIOLET-G	Fluor. Violet
SADV-PC-FLOYELLOW-G	Fluor. Yellow

[45]

5 GALLON

SADV-PC-FLOBLUE-5G	Fluor. Blue
SADV-PC-FLOGREEN-5G	Fluor. Green
SADV-PC-FLORANGE-5G	Fluor. Orange
SADV-PC-FLOPINK-5G	Fluor. Pink
SADV-PC-FLORED-5G	Fluor. Red
SADV-PC-FLOVIOLET-5G	Fluor. Violet

[45]

Aqueous Ammonia

AQUEOUS AMMONIA

TO INCREASE PH LEVELS, KILLS ODOR

SADV-AQUEOUS-110LBS	110 lbs
SADV-AQUEOUS-G	Gallon

[45]

Heat Set Waterbase Ink Prepared Blockout Colors

Blockout Colors are pre-mixed aqueous opaque colors that are ready to print. These colors can be mixed together to obtain a large variety of shades or printed as ready to use colors. They run on all equipment, but must be modified slightly for some equipment when viscosity is important. This can be accomplished by the addition of small amounts of thickener.

Additional additives are available such as Softeners, Thickeners, Penetrates, Curing and Crosslinking Agents. Colors should be cured at 300°F for three minutes unless fabric is too delicate, in which case lower temperatures and longer times can be used with careful testing of fastness after curing.

QUART

SADV-BLOCKSCARLET-Q	Scarlet
---------------------------	---------

[45]

GALLON

SADV-BLOCKSCARLET-G	Scarlet
---------------------------	---------

[45]

5 GALLON

SADV-BLOCKGOLD-5G	Gold
SADV-BLOCKGRN-5G	Green
SADV-BLOCKMAGENTA-5G	Magenta
SADV-BLOCKORNG-5G	Orange
SADV-BLOCKSCARLET-5G	Scarlet
SADV-BLOCKFLOPINK-5G	Fluorescent Pink

[45]

Glitter Powder

GLITTER POLYESTER POWDER

SADV-3PGLITTER-LB	4X4 Gold, 1 lb
SADV-3PGLITTER-5LB	8X8 Gold, 5 lb
SADV-400HGLITTER-LB	8X8 Crystal, 1 lb

[45]



Concentrate TC-2

Concentrate TC-2 is a pourable, water phase, printing concentrate. When used with the correct additives, it gives a very soft and high color yield to printed fabric. This product has been formulated with higher grade raw materials to lessen the possibility of smoke and other pollutants.

The ability to pour Concentrate TC-2 has made it, consistent and a successful back thickener, eliminating the need for extra inventory of thickeners. Concentrate TC-2 can be used on Roller Print, Flat Screens, Rotary equipment as well as hand screens, with optimum performance for all.

CONCENTRATE EXTENDER TC2 [45]

SADV-TC2CONCENT-Q.....	Quart
SADV-TC2CONCENT-G.....	Gallon
SADV-TC2CONCENT-5G.....	5 gal
SADV-TC2CONCENT-55G.....	55 gal

Texdry Powder Pigments

Waterbase Texdry Powder Pigments are dry crystal colorants that are easily dispersable in water. These pigments are five to 20 times stronger than normal pigment strength. Texdry Pigments are normally used at approximately .01 to 1.5% into extended medium for most applications where pigments are used. Applications include textile printing, coating, **garment dyeing and coloration of opaque products.**

5 GALLON [45]

SADV-PC-TDBLACK-5G.....	Black D-EB
SADV-PC-TDBLUED2G-5G.....	Blue D-2G
SADV-PC-TDGRNDBG-5G.....	Green D-BG
SADV-PC-TDREDDR-5G.....	Red D-R
SADV-PC-TDSCLET-5G.....	Scarlet D-A/B
SADV-PC-TDYELD2G-5G.....	Yellow D-2

DIRECT DYE [45]

SADV-DIRECT-BLK GX.....	Black, GX
SADV-DIRECT-BLU 2B.....	Blue, 2B
SADV-DIRECT-BRN BLR.....	Brown, BLR
SADV-DIRECT-GRN 2B.....	GREEN, 2B
SADV-DIRECT-NAVY GX.....	Navy Blue, GX
SADV-DIRECT-ORNG R.....	Orange, R
SADV-DIRECT-SCRLET B.....	Scarlet, B
SADV-DIRECT-VIOLET B.....	Violet, B

Crosslinking Agents

Waterbase crosslinking agents are used to improve wash fastness. These products, when added to the pigment color, will slightly increase the hand (or harshness) of the finished application.

Bond All III Controlled Thermosetting Resin

Texprint Bond All III is a controlled thermosetting resin that will not start crosslinking until 170° F.

BONDALL III CONTROLLED THERMOSETTING RESIN [45]

SADV-BONDALL3-Q.....	Controlled resin, qt
SADV-BONDALL3-G.....	Controlled resin, gal
SADV-BONDALL3-5G.....	Controlled resin, 5 gal
SADV-BONDALL3-55G.....	Controlled resin, 55 gal

Catalyst 195 Air Dry

Texprint Catalyst 195 is an air dry catalyst applied to fabric and paper.

CATALYST 195 AIR DRY [45]

SADV-195CATALYST-G.....	Air dry catalyst, gal
-------------------------	-----------------------

Low Crocks BA 1

Low Crock BA-1 is a modified co-polymer of butadiene-acrylic binder. This family of binders shows excellent wet and dry crock with extremely good stability to heat, UV, redispersibility and salt when used on cotton, polyester and their blends.

It is highly concentrated and should be used at a rate lower than most other types of binders, depending on the fabric and amount of color being applied. The product can be used in both printing and garment dyeing.

LOW CROCK BA-1 [45]

SADV-BA1LOWCROCK-Q.....	Quart
SADV-BA1LOWCROCK-G.....	Gallon
SADV-BA1LOWCROCK-5G.....	5 gal
SADV-BA1LOWCROCK-55G.....	55 gal

Low Crock NA

Low Crock NA is a high solids, modified acrylic binder that gives excellent dry crock fastness with a medium hand. This product is a non-yellowing binder that will not increase smoke within a print system.

It should be used at a rate of 2 to 30% depending on fabric and amount of color. Our product has been used on all types of equipment with good success.

LOW CROCK NA [45]

SADV-NALOWCROCK-Q.....	Quart
------------------------	-------

Low Crock EE-3

Low Crock EE-3 is a self thickening blended binder that gives excellent dry and wet crock fastness. It also exhibits excellent drycleanability without giving up brightness and yield.

Low Crock EE-3 is highly concentrated and should be used at a rate lower than most other binders, depending on the fabric and amount of color. Used on all types of equipment with success.

LOW-CROCK EE-3 [45]

SADV-EE3LOWCROCK-Q.....	Quart
SADV-EE3LOWCROCK-G.....	Gallon
SADV-EE3LOWCROCK-5G.....	5 gal
SADV-EE3LOWCROCK-30G.....	30 gal
SADV-EE3LOWCROCK-55G.....	55 gal

Discharge Pigment Colors

Waterbase pigments to print bright colors on dischargeable direct or reactive dyed cotton and other fabrics. Discharge colors strip the background colors of fabrics, leaving a bright pigment color after proper processing. Fabrics must be cured at 300° F immediately after printing for 3-8 min, depending on construction of fabric and over-all size of printed area. Continue curing until discharge is complete or printed area does not improve with additional curing.

Formula: add Discharge A 2 parts, Discharge BT or B 88 parts, Discharge Pigment Colors XX parts and start mixing then add Discharge C at 10% of parts A, B and discharge pigment color, add water if needed.

QUART [45]

SADV-PC-DSCBLUE-Q.....	Blue
------------------------	------

5 GALLON [45]

SADV-PC-DSCBLUE-5G.....	Blue
-------------------------	------

BT DISCHARGE BASE FOR PIGMENT PRINTING SYSTEMS [45]

SADV-BTDCBASE-G.....	BT Discharge base, gal
----------------------	------------------------

ADVANCED
Color & Chemical
Corporation



Plastisols Bright Tiger™



Wilflex Bright Tiger is a true bright white plastisol ink with excellent printability for a range of screen printing applications. Bright Tiger's excellent opacity, fiber mat down, low gloss level and very good flash properties permit it to be utilized as both a stand-alone and an underbase white. Bright Tiger also exhibits a very good level of dye migration resistance and low odor.

Recommended Substrates: 100% cotton, cotton/polyester blends, some synthetics.

Printing Recommendations: Mesh: 86-125 threads/in for optimum opacity on darks. 140-230 threads/in for underbasing. 195-305 threads/in for fine-line printing. Stencils: capillary films or a high quality emulsion and coating procedure. Squeegee: 60-80 durometer. Use a slightly dulled edge for coarse mesh counts and a sharp edge for fine mesh counts. Dual (70/90) or triple (70/90/70) durometer squeegees are highly recommended.

Flash Cure and Fusion Gel: 160-180° F. Cure: 320° F.

Modifiers: if viscosity reduction is absolutely necessary, a maximum of 5% (by weight) of Wilflex Curable Reducer #10070 may be added. At this level of addition, the ink's viscosity can be reduced by 20-25% from its original viscosity.

Wash-up: solvents or Wilflex screen wash.

BRIGHT TIGER

FP-HT-11480-5G	Bright tiger, 5 gal
FP-HT-11480-G	Bright Tiger, gal
FP-HT-11480-Q	Bright Tiger, qt

[57]

Xtreme White™ for 100% Cotton, Fine Meshes

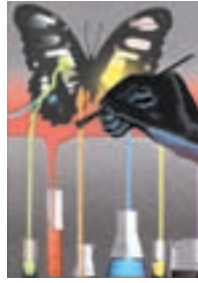
A super smooth, creamy white ink that flashes fast and prints through fine meshes on 100% cotton only. It takes your production processes to the extreme by cutting flash times dramatically and producing a fiber-lock matte finish on color overprints.

XTREME WHITE FOR FINE MESHES ON 100% COTTON

FP-11999XW-Q	Xtreme White for fine meshes on 100% cotton, qt
FP-11999XW-G	Xtreme White for fine meshes, 100% cotton, gal
FP-11999XW-5G	Xtreme White for fine meshes, 100% cotton, 5 gal

[57]

MX Color Mixing System Inks



The Wilflex MX Color Mixing System is a computerized easy-to-use, easy-to-mix color matching system with 15 intermixable colors that enables printers to produce simulations of PANTONE® Color Formula Guide colors on white and dark (with white underlay) garments. MX Mixing Inks produce soft-hand inks for high production, wet-on-wet printing, offering a matte finish and improved crock resistance.

The MX Color Mixing System Starter Kit includes a quart of each color and Finesse, a gallon of 11888MX White, IMS Software for your PC and the PANTONE Color Formula Guide.

MX COLORS

[57]

FP-MX-STARTER KIT	Starter Kit
FP-MX-11888-G	White, gallon
FP-MX-19888-G	Black, gallon
FP-MX-38888-G	Orange, gallon
FP-MX-48888-G	Red, gallon
FP-MX-48889-G	Magenta, gallon
FP-MX-58888-G	Violet, gallon
FP-MX-68888-G	Marine, gallon
FP-MX-68889-G	Blue, gallon
FP-MX-78888-G	Green, gallon
FP-MX-88888-G	Yellow, gallon
FP-MX-11888-5G	White, 5 gallon
FP-MX-19888-5G	Black, 5 gallon
FP-MX-38888-5G	Orange, 5 gallon
FP-MX-48888-5G	Red, 5 gallon
FP-MX-48889-5G	Magenta, 5 gallon
FP-MX-58888-5G	Violet, 5 gallon
FP-MX-68888-5G	Marine, 5 gallon
FP-MX-68889-5G	Blue, 5 gallon
FP-MX-78888-5G	Green, 5 gallon
FP-MX-88888-5G	Yellow, 5 gallon

MX COLORS, QUART

[57]

FP-MX-11888-Q	White, Quart
FP-MX-19888-Q	Black, Quart
FP-MX-38888-Q	Orange, Quart
FP-MX-48888-Q	Red (Blue/Shade), Quart
FP-MX-48889-Q	Magenta, Quart
FP-MX-58888-Q	Violet, Quart
FP-MX-68888-Q	Marine (Red/Shade), Quart
FP-MX-68889-Q	Blue (Green/Shade), Quart
FP-MX-78888-Q	Green, Quart
FP-MX-88888-Q	Yellow, Quart

MX FLUORESCENT COLORS

[57]

FP-MX-98880-G	Fluor. Pink, gallon
FP-MX-98884-G	Fluor. Red, gallon
FP-MX-98885-G	Fluor. Purple, gallon
FP-MX-98886-G	Fluor. Blue, gallon
FP-MX-98888-G	Fluor. Yellow, gallon
FP-MX-98880-5G	Fluor. Pink, 5 gallon
FP-MX-98884-5G	Fluor. Red, 5 gallon
FP-MX-98885-5G	Fluor. Purple, 5 gallon
FP-MX-98886-5G	Fluor. Blue, 5 gallon
FP-MX-98888-5G	Fluor. Yellow, 5 gallon

MX FLUORESCENT COLORS, QUART

[57]

FP-MX-98884-Q	Fluor. Red, Quart
FP-MX-98885-Q	Fluor. Purple, Quart
FP-MX-98886-Q	Fluor. Blue, Quart
FP-MX-98888-Q	Fluor. Yellow, Quart





NuPuff Plastisol Puff Ink

NuPuff plastisol puff ink gives the relief of similar water based inks on cotton, cotton blends, polyester and other synthetics.

Printing Recommendations: Mesh: for maximum puff on a large area print use 60-86 threads/in. For fine detail work use 95-110 threads/in. Emulsion: direct emulsions or capillary film.

Curing: "puff" occurs at 290-330° F, full cure at 320° F.

Modifiers: Curable Reducer #10070, amounts above 10%, by weight, will cause reduction in puff height. Finesse #10150 may be used to lower puff height without reducing viscosity.

QUART

[57]

FP-NUPUFF-BASE-Q	Base
FP-NUPUFF-BLACK-Q	Black
FP-NUPUFF-KELLY-Q	Kelly
FP-NUPUFF-LEMON-Q	Lemon Yel
SSV-LF-8011	Light Gold
FP-NUPUFF-LTROYAL-Q	Light Royal

FP-NUPUFF-NAVY-Q	Navy
FP-NUPUFF-PURPLE-Q	Purple
FP-NUPUFF-SCARLET-Q	Scarlet
FP-NUPUFF-WHITE-Q	White

GALLON

[57]

FP-NUPUFF-BASE-G	Base
FP-NUPUFF-BLACK-G	Black
FP-NUPUFF-KELLY-G	Kelly
FP-NUPUFF-LEMON-G	Lemon Yel
SSV-LF-8011	Light Gold
FP-NUPUFF-LTROYAL-G	Light Royal
FP-NUPUFF-NAVY-G	Navy
FP-NUPUFF-PURPLE-G	Purple
FP-NUPUFF-SCARLET-G	Scarlet
FP-NUPUFF-WHITE-G	White

5 GALLON

[57]

FP-NUPUFF-BASE-5G	Base
FP-NUPUFF-BLACK-5G	Black
FP-NUPUFF-KELLY-5G	Kelly
FP-NUPUFF-LTROYAL-5G	Light Royal
FP-NUPUFF-NAVY-5G	Navy
FP-NUPUFF-PURPLE-5G	Purple
FP-NUPUFF-SCARLET-5G	Scarlet
FP-NUPUFF-WHITE-5G	White



Wilflex Genesis Inks

High productivity wet-on-wet printing. Most Genesis inks are opaque, optimum opacity is achieved with Genesis Super inks. Excellent resistance to build-up. May be used to print cold peel transfers. 10540GNS Genesis Base and 10680GNS Genesis Plus Base have similar print characteristics. However, 10680GNS offers a matte finish and is more opaque.

Recommended Substrates: cotton, cotton blends, polyesters, some nylon, synthetics. **Cold Peel Transfers:** parchment paper.

Printing Recommendations: Mesh: optimum opacity- 86-120 threads/in. Over-printing and fine line printing: 120-280 threads/in. Printing on white or light fabrics: 110-280 threads/in. Process colors: 305-355 threads/in. **Cold Peel Transfers:** 86-120 threads/in. Squeegee: medium durometer, slightly rounded edge.

Emulsion: direct or capillary films.

Curing: Gel or flash-cure: 230° F. Full Cure: 320° F. Transfers: 350° F.

Modifiers: use Finesse #10150 to extend and soften hand, additions greater than 20% (by weight) will reduce opacity. Curable Reducer #10070, maximum addition of 5% by weight.

Wash-up: solvents or Wilflex screen wash.



Genesis Plastisol Ink

QUART [57]

FP-GNS-1000-Q	Halftone Base (Special Order)
FP-GNS-1260-Q	Flesh
FP-GNS-1330-Q	Russell Gray
FP-GNS-1460-Q	Dark Gray
FP-GNS-1900-Q	Black
FP-GNS-2010-Q	Dark Brown
FP-GNS-2380-Q	Spice Brown
FP-GNS-3020-Q	Bright Orange
FP-GNS-3040-Q	Dolphin Orange
FP-GNS-4000-Q	Scarlet
FP-GNS-4070-Q	Brick Red
FP-GNS-4140-Q	Rebel Red
FP-GNS-4200-Q	Dallas Scarlet
FP-GNS-4300-Q	National Red
FP-GNS-4580-Q	Russell Cardinal
FP-GNS-4760-Q	Brandywine
FP-GNS-4860-Q	Burgundy
FP-GNS-5020-Q	Purple
FP-GNS-5040-Q	Russell Purple
FP-GNS-6000-Q	Navy Blue
FP-GNS-6042-Q	Deacon Blue
FP-GNS-6065-Q	Contact Blue
FP-GNS-6180-Q	Bright Royal
FP-GNS-6210-Q	Light Royal
FP-GNS-6300-Q	Reflex Blue
FP-GNS-6610-Q	Bear's Navy
FP-GNS-6780-Q	Deep Aqua
FP-GNS-7000-Q	Kelly Green
FP-GNS-7050-Q	Dallas Green
FP-GNS-7530-Q	Turquoise
FP-GNS-7590-Q	Blacklight Green
FP-GNS-8100-Q	Lemon Yellow
FP-GNS-8250-Q	Yellow

GALLON

[57]

FP-GNS-1000-G	Halftone Base (Special Order)
FP-GNS-1054-G	Base
FP-GNS-1068-G	Plus Base
FP-GNS-1260-G	Flesh
FP-GNS-1330-G	Russell Gray
FP-GNS-1460-G	Dark Gray
FP-GNS-1900-G	Black
FP-GNS-2010-G	Dark Brown
FP-GNS-2380-G	Spice Brown
FP-GNS-3020-G	Bright Orange
FP-GNS-3040-G	Dolphin Orange
FP-GNS-4000-G	Scarlet
FP-GNS-4070-G	Brick Red
FP-GNS-4140-G	Rebel Red
FP-GNS-4200-G	Dallas Scarlet
FP-GNS-4300-G	National Red
FP-GNS-4580-G	Russell Cardinal

FP-GNS-4760-G	Brandywine
FP-GNS-4860-G	Burgundy (Special Order)
FP-GNS-5020-G	Purple
FP-GNS-5040-G	Russell Purple
FP-GNS-6000-G	Navy Blue
FP-GNS-6042-G	Deacon Blue
FP-GNS-6065-G	Contact Blue
FP-GNS-6180-G	Bright Royal
FP-GNS-6210-G	Light Royal
FP-GNS-6300-G	Reflex Blue
FP-GNS-6610-G	Bear's Navy
FP-GNS-6780-G	Deep Aqua
FP-GNS-7000-G	Kelly Green
FP-GNS-7050-G	Dallas Green
FP-GNS-7530-G	Turquoise
FP-GNS-7590-G	Blacklight Green
FP-GNS-8100-G	Lemon Yellow
FP-GNS-8250-G	Yellow
FP-GNS-DS28642A-G	Mixing white

5 GALLON

[57]

FP-GNS-1000-5G	Halftone Base (Special Order)
FP-GNS-1054-5G	Base
FP-GNS-1068-5G	Plus Base
FP-GNS-1260-5G	Flesh
FP-GNS-1330-5G	Russell Gray
FP-GNS-1460-5G	Dark Gray
FP-GNS-1900-5G	Black
FP-GNS-2010-5G	Dark Brown
FP-GNS-2380-5G	Spice Brown
FP-GNS-3020-5G	Bright Orange
FP-GNS-3040-5G	Dolphin Orange
FP-GNS-4000-5G	Scarlet
FP-GNS-4140-5G	Rebel Red
FP-GNS-4200-5G	Dallas Scarlet
FP-GNS-4300-5G	National Red
FP-GNS-4580-5G	Russell Cardinal
FP-GNS-4760-5G	Brandywine
FP-GNS-4860-5G	Burgundy (Special Order)
FP-GNS-5020-5G	Purple
FP-GNS-5040-5G	Russell Purple
FP-GNS-6000-5G	Navy Blue
FP-GNS-6042-5G	Deacon Blue
FP-GNS-6065-5G	Contact Blue
FP-GNS-6180-5G	Bright Royal
FP-GNS-6210-5G	Light Royal
FP-GNS-6300-5G	Reflex Blue
FP-GNS-6610-5G	Bear's Navy
FP-GNS-6780-5G	Deep Aqua
FP-GNS-7000-5G	Kelly Green
FP-GNS-7050-5G	Dallas Green
FP-GNS-7530-5G	Turquoise
FP-GNS-7590-5G	Blacklight Green
FP-GNS-8100-5G	Lemon Yellow
FP-GNS-8250-5G	Yellow



Screen Printing

INKS

Genesis Super Opaque Shades

QUART	[57]
FP-GNS-3480-Q.....	Clock Work Orange
FP-GNS-4050-Q.....	Red
FP-GNS-4227-Q.....	Drake Red
FP-GNS-4703-Q.....	Fuchsia
FP-GNS-5701-Q.....	Purple
FP-GNS-5713-Q.....	Fuchsia 3
FP-GNS-60007-Q.....	Marine Blue
FP-GNS-6704-Q.....	Bright Blue
FP-GNS-6705-Q.....	Royal
FP-GNS-75601-Q.....	Spring Green
FP-GNS-8000-Q.....	Gold
FP-GNS-8010-Q.....	Light Gold
FP-GNS-8702-Q.....	Lemon
FP-GNS-8703-Q.....	Primrose
FP-GNS-9001-Q.....	Fluor. Yellow
FP-GNS-9021-Q.....	Fluor. Green
FP-GNS-9031-Q.....	Fluor. Orange
FP-GNS-9041-Q.....	Fluor. Pink
FP-GNS-9051-Q.....	Quart
FP-GNS-9061-Q.....	Fluor. Red
FP-GNS-9071-Q.....	Fluor. Magenta

GALLON	[57]
FP-GNS-3480-G.....	Clock Work Orange
FP-GNS-4050-G.....	Red
FP-GNS-4227-G.....	Drake Red
FP-GNS-4703-G.....	Fuchsia
FP-GNS-4721-G.....	Red 2
FP-GNS-5701-G.....	Purple
FP-GNS-5713-G.....	Fuchsia 3
FP-GNS-60007-G.....	Marine Blue
FP-GNS-6704-G.....	Bright Blue
FP-GNS-6705-G.....	Royal
FP-GNS-7424-G.....	Alpha Lime
FP-GNS-75601-G.....	Spring Green

FP-GNS-8000-G.....	Gold
FP-GNS-8010-G.....	Light Gold
FP-GNS-8702-G.....	Lemon
FP-GNS-8703-G.....	Primrose
FP-GNS-9001-G.....	Fluor. Yellow
FP-GNS-9021-G.....	Fluor. Green
FP-GNS-9031-G.....	Fluor. Orange
FP-GNS-9041-G.....	Fluor. Pink
FP-GNS-9051-G.....	Gallon
FP-GNS-9061-G.....	Fluor. Red
FP-GNS-9071-G.....	Fluor. Magenta

5 GALLON	[57]
FP-GNS-4050-5G.....	Super Red
FP-GNS-3480-5G.....	Clock Work Orange
FP-GNS-4227-5G.....	Drake Red
FP-GNS-4703-5G.....	Fuchsia
FP-GNS-4721-5G.....	Red 2
FP-GNS-5701-5G.....	Purple
FP-GNS-5713-5G.....	Fuchsia 3
FP-GNS-60007-5G.....	Marine Blue
FP-GNS-6704-5G.....	Bright Blue
FP-GNS-6705-5G.....	Royal
FP-GNS-7424-5G.....	Alpha Lime
FP-GNS-75601-5G.....	Spring Green
FP-GNS-8000-5G.....	Gold
FP-GNS-8010-5G.....	Light Gold
FP-GNS-8702-5G.....	Lemon
FP-GNS-8703-5G.....	Primrose
FP-GNS-9001-5G.....	Fluor. Yellow
FP-GNS-9021-5G.....	Fluor. Green
FP-GNS-9031-5G.....	Fluor. Orange
FP-GNS-9041-5G.....	Fluor. Pink
FP-GNS-9051-5G.....	Fluor. Neon
FP-GNS-9061-5G.....	Fluor. Red
FP-GNS-9071-5G.....	Fluor. Magenta



Genesis Four Color Process

Genesis Four Color Process plastisols are pure, high intensity, transparent colors designed for high productivity and direct wet-on-wet printing. It allows for excellent resistance to build-up, superb printability, extremely soft hand and minimal dot gain.

Substrates: 100% cotton, cotton/polyester blends, all white backgrounds. If printing on colored fabrics use underbase.

Printing Recommendations: Mesh: 305-355 threads/in monofilament polyester. **Stencils:** capillary films or a high quality emulsion and coating procedure. Squeegee: 70-80 durometer and a sharp edge; dual (70/90) or triple (70/90/70) durometer.

Curing: Cure: 320° F.

Modifiers: Finesse #10150FNS to reduce color concentrations.

Wash-up: solvents or Wilflex screen wash.

QUART	[57]
FP-GNS-1985-Q.....	Process Black
FP-GNS-4985-Q.....	Process Magenta
FP-GNS-6985-Q.....	Process Cyan
FP-GNS-8985-Q.....	Process Yellow

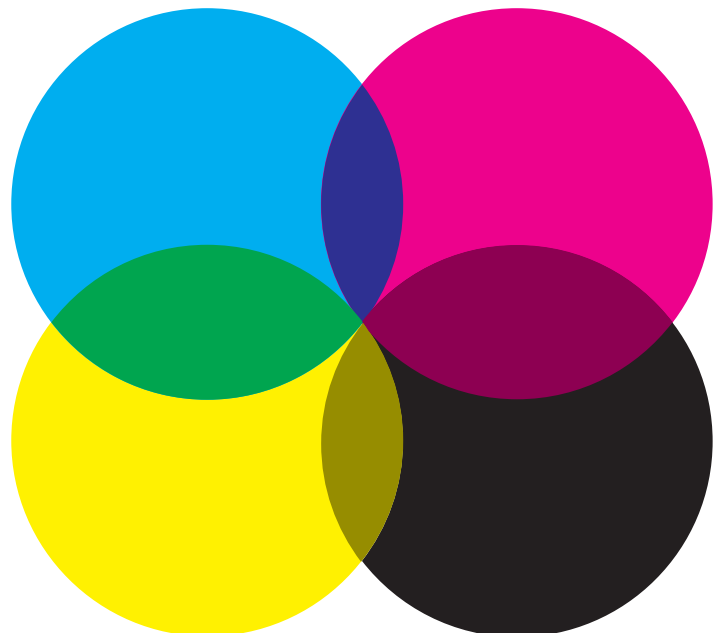
GALLON	[57]
FP-GNS-1985-G.....	Process Black
FP-GNS-4985-G.....	Process Magenta
FP-GNS-6985-G.....	Process Cyan
FP-GNS-8985-G.....	Process Yellow

5 GALLON	[57]
FP-GNS-1985-5G.....	Process Black
FP-GNS-4985-5G.....	Process Magenta
FP-GNS-6985-5G.....	Process Cyan
FP-GNS-8985-5G.....	Process Yellow

GNS Process Tone Colors

Alternate sets of GNS Process colors which are diluted in color strength or lighter tone for creation of natural colors straight from the container. There is no need to add Finesse to obtain lighter, more natural colors than the GNS Process Colors.

5 GALLON	[57]
FP-GNS-49855-5G.....	Magenta
FP-GNS-69855-5G.....	Cyan
FP-GNS-PROTONE KIT	Genesis tone process kit





Silkscreen Vinyl-Fast Fusion

Wilflex Silk Screen Vinyl is a plastisol ink for direct screen applications on textiles. It is ideal for athletic printing because it has excellent abrasion resistance, elongation and tensile strength. Silk Screen Vinyl has minimal after-flash tack and works well in applications requiring heavy deposits and multiple ink layers. It may be heat transferred from release paper to garments and also may be used as a flock adhesive.

Recommended Substrates: cotton, cotton blends, polyesters, some nylon (generally open weave or mesh) and other synthetics.

Printing Recommendations: Mesh: for optimum opacity- 86-120 threads/in. Overprinting and fine line printing: 120-280 threads/in. Printing onto white or light fabrics: 110-280 threads/in. Process colors: 305-355 threads/in. Cold Peel Transfers: 86-120 threads/in. Squeegee: medium durometer, slightly rounded edge. Emulsion: direct or capillary films.

Curing Gel or Flash-Cure: 230° F. Full Cure: 320° F. Transfer Temp: 350° F.

Modifiers: Finesse #10150 to extend and soften hand, more than 20% (by weight) will reduce opacity. Curable Reducer #10070, maximum addition of 5% by weight.

Wash-up: solvents or Wilflex screen wash.

Some SSV inks are special mix. Please allow 48 hours.

QUART [57]

FP-SSV-FF-1004-Q.....	Base (Special Order)
FP-SSV-FF-110-Q.....	White
FP-SSV-FF-1900-Q.....	Black

GALLON [57]

FP-SSV-FF-110-G.....	White
FP-SSV-FF-1004-G.....	Base (Special Order)
FP-SSV-FF-1900-G.....	Black

5 GALLON [57]

FP-SSV-FF-110-5G.....	White
FP-SSV-FF-1004-5G.....	Base
FP-SSV-FF-1900-5G.....	Black

Silkscreen Lead Free

QUART [57]

FP-SSV-LF-153-Q.....	Coffee Silver
FP-SSV-LF-190-QT.....	Black
FP-SSV-LF-458-Q.....	Russell Cardinal
FP-SSV-LF-504-Q.....	Russell Purple
FP-SSV-LF-600-Q.....	Navy Blue
FP-SSV-LF-621-Q.....	Royal Blue
FP-SSV-LF-3480-Q.....	Clockwork Orange
FP-SSV-LF-4000-Q.....	Scarlet
FP-SSV-LF-4200-Q.....	Dallas Scarlet
FP-SSV-LF-4540-Q.....	Maroon
FP-SSV-LF-4729-Q.....	Red
FP-SSV-LF-7000-Q.....	Kelly Green
FP-SSV-LF-8001-Q.....	Athletic Gold
FP-SSV-LF-11003-Q.....	Athletic Trophy White
FP-SSV-LF-88800IS-Q.....	Omni Gold

GALLON [57]

FP-SSV-LF-133-G.....	Russell Gray
FP-SSV-LF-190-G.....	Black
FP-SSV-LF-414-G.....	Rev. Red
FP-SSV-LF-454-G.....	Maroon
FP-SSV-LF-458-G.....	Russell Cardinal
FP-SSV-LF-504-G.....	Russell Purple
FP-SSV-LF-517-G.....	Morning Glory
FP-SSV-LF-522-G.....	Bright Berry
FP-SSV-LF-538-G.....	Powdered Violet
FP-SSV-LF-600-G.....	Navy blue
FP-SSV-LF-621-G.....	Royal Blue
FP-SSV-LF-700-G.....	Kelly
FP-SSV-LF-705-G.....	Dallas Green
FP-SSV-LF-1111HY-G.....	Base High Yield
FP-SSV-LF-2010-G.....	Dark Brown
FP-SSV-LF-3040-G.....	Dolphin Orange
FP-SSV-LF-3480-G.....	Clockwork Orange
FP-SSV-LF-4000-G.....	Scarlet
FP-SSV-LF-4200-G.....	Dallas Scarlet
FP-SSV-LF-4729-G.....	Red
FP-SSV-LF-8001-G.....	Athletic Gold
FP-SSV-LF-11003-G.....	Athletic Trophy White
FP-SSV-LF-88800IS-G.....	Omni Gold

5 GALLON [57]

FP-SSV-LF-190-5G.....	Black
FP-SSV-LF-504-5G.....	Russell Purple
FP-SSV-LF-600-5G.....	Navy
FP-SSV-LF-621-5G.....	Royal Blue
FP-SSV-LF-700-5G.....	Kelly
FP-SSV-LF-705-5G.....	Dallas Green
FP-SSV-LF-1111HY-5G.....	Base High Yield Vinyl
FP-SSV-LF-3480-5G.....	Clockwork Orange
FP-SSV-LF-4000-5G.....	Scarlet
FP-SSV-LF-4729-5G.....	Red
FP-SSV-LF-8001-5G.....	Athletic Gold
FP-SSV-LF-11003-5G.....	Athletic Trophy
FP-SSV-LF-88800IS-5G.....	Omni Gold

GRAM [57]

FP-SSV-FF-1004-GR.....	Base (Special Order)
FP-SSV-LF-1016-GR.....	Silkscreen miracle underbase
FP-SSV-LF-1111HY-GR.....	Base highyield





Screen Printing

INKS

MP Series

Wilflex Multi-Print Ink is a general purpose ink for direct printing. Although many are opaque, optimum opacity is achieved with Multi-Print Super shades. Multi-Print inks are easy to print and may be used for cold-peel transfers.

Recommended Substrates: cotton, cotton blends, polyesters, some nylons (generally open weave or mesh types) and synthetics. For transfers use parchment paper.

Printing Recommendations: Mesh: optimum opacity 63-20 threads/in. For low bleed fabrics, fine line printing or overprinting onto an underbase use 120-200 threads/in. Process colors use 305-355 threads/in monofilaments meshes. Squeegee: 70 durometer squeegee with a slightly rounded edge. Emulsion: direct emulsions or capillary films.

Curing: Flash cure: 230-245° F. Cure: 320° F.

Modifiers: add Finesse #10150 to reduce viscosity and soften hand, amounts above 20% by weight will reduce opacity. Add Curable Reducer #10070 to reduce viscosity (1-5% by weight).

Wash-up: mineral spirits, solvent screen cleaners or Wilflex screen wash.

QUART [57]

FP-MP-672-Q	Mac Aqua
FP-MP-1260-Q	Rebel Flesh
FP-MP-1280-Q	Soffee Flesh
FP-MP-1330-Q	Russell Gray
FP-MP-1460-Q	Dark Gray
FP-MP-1900-Q	Black
FP-MP-2010-Q	Dark Brown
FP-MP-2030-Q	Spanjian Brown
FP-MP-2380-Q	Spice Brown
FP-MP-2600-Q	Charlie Brown
FP-MP-3020-Q	Bright Orange
FP-MP-3040-Q	Dolphin Orange
FP-MP-3270-Q	Russel Rust
FP-MP-4000-Q	Scarlet
FP-MP-4016-Q	Panther Pink
FP-MP-4018-Q	Fire Engine Red
FP-MP-4070-Q	Brick Red
FP-MP-4140-Q	Rebel Red
FP-MP-4200-Q	Dallas Scarlet
FP-MP-4227-Q	Drake Red
FP-MP-4470-Q	Winter Red
FP-MP-4540-Q	Maroon
FP-MP-4580-Q	Russell Cardinal
FP-MP-4760-Q	Brandywine
FP-MP-4870-Q	Blacklight
FP-MP-5001-Q	Graphic Purple
FP-MP-5020-Q	Purple
FP-MP-5040-Q	Russell Purple
FP-MP-5270-Q	Maui Lilac
FP-MP-6000-Q	Navy Blue
FP-MP-6042-Q	Deacon Blue
FP-MP-6065-Q	Contact Blue
FP-MP-6070-Q	Columbia Blue
FP-MP-6180-Q	Bright Royal
FP-MP-6210-Q	Light Royal

FP-MP-6290-Q	Soft Blue
FP-MP-6300-Q	Reflex Blue
FP-MP-6350-Q	Rebel Royal
FP-MP-6690-Q	Island Blue
FP-MP-6705-Q	Opaque Royal
FP-MP-6750-Q	Ad Blue
FP-MP-6760-Q	Light Aqua
FP-MP-6810-Q	Parrot Blue
FP-MP-6850-Q	Winter Blue
FP-MP-6985-Q	Modified Cyan
FP-MP-7000-Q	Kelly Green
FP-MP-7050-Q	Dallas Green
FP-MP-7180-Q	Rebel Green
FP-MP-7530-Q	Turquoise
FP-MP-8000-Q	Gold
FP-MP-8010-Q	Light Gold
FP-MP-8100-Q	Lemon Yellow
FP-MP-8250-Q	Yellow
FP-MP-8770-Q	Sunshine Yellow

GALLON [57]

FP-MP-305-G	Tennessee Orange
FP-MP-1260-G	Rebel Flesh
FP-MP-1280-G	Soffee Flesh
FP-MP-1330-G	Russell Gray
FP-MP-1460-G	Dark Gray
FP-MP-1480-G	London Smoke
FP-MP-1900-G	Black
FP-MP-2010-G	Dark Brown
FP-MP-2030-G	Spanjian Brown
FP-MP-2380-G	Spice Brown
FP-MP-2600-G	Charlie Brown
FP-MP-3020-G	Bright Orange
FP-MP-3040-G	Dolphin Orange
FP-MP-3270-G	Russel Rust
FP-MP-4000-G	Scarlet
FP-MP-4016-G	Panther Pink
FP-MP-4018-G	Fire Engine Red
FP-MP-4070-G	Brick Red
FP-MP-4140-G	Rebel Red
FP-MP-4200-G	Dallas Scarlet
FP-MP-4227-G	Drake Red
FP-MP-4470-G	Winter Red
FP-MP-4540-G	Maroon
FP-MP-4580-G	Russell Cardinal
FP-MP-4870-G	Blacklight
FP-MP-5001-G	Graphic Purple
FP-MP-5020-G	Purple
FP-MP-5040-G	Russell Purple
FP-MP-6000-G	Navy Blue
FP-MP-6042-G	Deacon Blue
FP-MP-6065-G	Contact Blue
FP-MP-6070-G	Columbia Blue
FP-MP-6180-G	Bright Royal
FP-MP-6210-G	Light Royal
FP-MP-6290-G	Soft Blue
FP-MP-6300-G	Reflex Blue
FP-MP-6350-G	Rebel Royal
FP-MP-6690-G	Island Blue
FP-MP-6705-G	Opaque Royal
FP-MP-672-G	Macaque
FP-MP-6750-G	Ad Blue
FP-MP-6760-G	Light Aqua
FP-MP-6810-G	Parrot Blue
FP-MP-6850-G	Winter Blue
FP-MP-6985-G	Modified Cyan
FP-MP-7000-G	Kelly Green
FP-MP-7050-G	Dallas Green
FP-MP-7180-G	Rebel Green
FP-MP-7330-G	Volvox Green
FP-MP-7530-G	Turquoise
FP-MP-8000-G	Gold
FP-MP-8010-G	Light Gold
FP-MP-8100-G	Lemon Yellow
FP-MP-8250-G	Yellow
FP-MP-8770-G	Sunshine Yellow

5 GALLON [57]

FP-MP-600-5G	Navy Blue
FP-MP-672-5G	Mac Aqua
FP-MP-1260-5G	Rebel Flesh
FP-MP-1280-5G	Soffee Flesh
FP-MP-1330-5G	Russell Gray
FP-MP-1460-5G	Dark Gray
FP-MP-1480-5G	London Smoke
FP-MP-1900-5G	Black
FP-MP-2010-5G	Dark Brown
FP-MP-2030-5G	Spanjian Brown
FP-MP-2380-5G	Spice Brown

FP-MP-2600-5G	Charlie Brown
FP-MP-3020-5G	Bright Orange
FP-MP-3040-5G	Dolphin Orange
FP-MP-3270-5G	Russel Rust
FP-MP-4000-5G	Scarlet
FP-MP-4016-5G	Panther Pink
FP-MP-4018-5G	Fire Engine Red
FP-MP-4070-5G	Brick Red
FP-MP-4140-5G	Rebel Red
FP-MP-4200-5G	Dallas Scarlet
FP-MP-4227-5G	Drake Red
FP-MP-4470-5G	Winter Red
FP-MP-4540-5G	Maroon
FP-MP-4580-5G	Russell Cardinal
FP-MP-4870-5G	Blacklight
FP-MP-5001-5G	Graphic Purple
FP-MP-6042-5G	Deacon Blue
FP-MP-6065-5G	Contact Blue
FP-MP-6070-5G	Columbia Blue
FP-MP-6180-5G	Bright Royal
FP-MP-6210-5G	Light Royal
FP-MP-6290-5G	Soft Blue
FP-MP-6300-5G	Reflex Blue
FP-MP-6350-5G	Rebel Royal
FP-MP-6690-5G	Island Blue
FP-MP-6705-5G	Opaque Royal
FP-MP-6750-5G	Ad Blue
FP-MP-6760-5G	Light Aqua
FP-MP-6810-5G	Parrot Blue
FP-MP-6850-5G	Winter Blue
FP-MP-6985-5G	Modified Cyan
FP-MP-7000-5G	Kelly Green
FP-MP-7050-5G	Dallas Green
FP-MP-7180-5G	Rebel Green
FP-MP-7330-5G	Volvox Green
FP-MP-7530-5G	Turquoise
FP-MP-8000-5G	Gold
FP-MP-8010-5G	Light Gold
FP-MP-8100-5G	Lemon Yellow
FP-MP-8250-5G	Yellow
FP-MP-8770-5G	Sunshine Yellow





Super Opaque (S.O.) Shades

QUART	[57]
FP-MP-4050-Q	S.O. Red
FP-MP-4703-Q	S.O. Fuchsia
FP-MP-5701-Q	S.O. Purple
FP-MP-6704-Q	S.O. Bright Blue
FP-MP-8702-Q	S.O. Lemon Yellow
FP-MP-70501-Q	S.O. Dallas Green
FP-MP-75301-Q	S.O. Turquoise
FP-MP-75601-Q	S.O. Spring Green

GALLON	[57]
FP-MP-4050-G	S.O. Red
FP-MP-4703-G	S.O. Fuchsia
FP-MP-5701-G	S.O. Purple
FP-MP-6704-G	S.O. Bright Blue
FP-MP-70501-G	S.O. Dallas Green
FP-MP-75301-G	S.O. Turquoise
FP-MP-75601-G	S.O. Spring Green
FP-MP-8702-G	S.O. Lemon Yellow

5 GALLON	[57]
FP-MP-4050-5G	S.O. Red
FP-MP-4703-5G	S.O. Fuchsia
FP-MP-5701-5G	S.O. Purple
FP-MP-6704-5G	S.O. Bright Blue
FP-MP-8702-5G	S.O. Lemon Yellow
FP-MP-70501-5G	S.O. Dallas Green
FP-MP-75301-5G	S.O. Turquoise
FP-MP-75601-5G	S.O. Spring Green

Fluorescent Shades

QUART	[57]
FP-MP-1200-Q	Flo Base
FP-MP-9010-Q	Fluor. Blue
FP-MP-9020-Q	Fluor. Green
FP-MP-9030-Q	Fluor. Orange
FP-MP-9040-Q	Fluor. Pink
FP-MP-9050-Q	Fluor. Neon
FP-MP-9060-Q	Fluor. Red

GALLON	[57]
FP-MP-1200-G	Flo Base
FP-MP-9010-G	Fluor. Blue
FP-MP-9020-G	Fluor. Green
FP-MP-9030-G	Fluor. Orange
FP-MP-9040-G	Fluor. Pink
FP-MP-9050-G	Fluor. Neon
FP-MP-9060-G	Fluor. Red
FP-MP-9070-G	Fluor. Magenta

5 GALLON	[57]
FP-MP-1200-5G	Flo Base
FP-MP-9010-5G	Fluor. Blue
FP-MP-9020-5G	Fluor. Green
FP-MP-9050-5G	Fluor. Neon
FP-MP-9060-5G	Fluor. Red

Super Opaque (S.O.) Fluorescent Shades

QUART	[57]
FP-MP-9001-Q	S.O. Fluor. Yellow
FP-MP-9011-Q	S.O. Fluor. Blue
FP-MP-9021-Q	S.O. Fluor. Green
FP-MP-9031-Q	S.O. Fluor. Orange
FP-MP-9041-Q	S.O. Fluor. Pink
FP-MP-9051-Q	S.O. Fluor. Neon (Special Order)
FP-MP-9061-Q	S.O. Fluor. Red
FP-MP-9071-Q	S.O. Fluor. Magenta

GALLON	[57]
FP-MP-9001-G	S.O. Fluor. Yellow
FP-MP-9011-G	S.O. Fluor. Blue
FP-MP-9021-G	S.O. Fluor. Green
FP-MP-9031-G	S.O. Fluor. Orange
FP-MP-9041-G	S.O. Fluor. Pink
FP-MP-9051-G	S.O. Fluor. Neon
FP-MP-9061-G	S.O. Fluor. Red
FP-MP-9071-G	S.O. Fluor. Magenta

5 GALLON	[57]
FP-MP-9001-5G	S.O. Fluor. Yellow
FP-MP-9011-5G	S.O. Fluor. Blue
FP-MP-9021-5G	S.O. Fluor. Green
FP-MP-9031-5G	S.O. Fluor. Orange
FP-MP-9041-5G	S.O. Fluor. Pink
FP-MP-9051-5G	S.O. Fluor. Neon
FP-MP-9061-5G	S.O. Fluor. Red
FP-MP-9071-5G	S.O. Fluor. Magenta

Process Colors

QUART	[57]
FP-MP-1985-Q	Process Black
FP-MP-4985-Q	Process Magenta
FP-MP-8985-Q	Process Yellow
FP-MP-6985-Q	Process Blue

GALLON	[57]
FP-MP-1985-G	Process Black
FP-MP-4985-G	Process Magenta
FP-MP-8985-G	Process Yellow
FP-MP-6985-G	Process Blue

5 GALLON	[57]
FP-MP-1985-5G	Process Black
FP-MP-4985-5G	Process Magenta
FP-MP-8985-5G	Process Yellow
FP-MP-6985-5G	Process Blue

Modifiers

SOFT HAND EXTENDER BASE FOR PLASTISOL INKS	[57]
FP-MP-SOFTTEXTENDER-Q ...	Quart
FP-MP-SOFTTEXTENDER-G ...	Gallon
FP-MP-SOFTTEXTENDER5G ...	5 gal
FP-MASTERCOLOR-BOOK...	672 color swatches for MP inks

Pennant Series

The Wilflex Pennant Series plastisol inks are vinyl inks for direct printing of athletic uniforms with high gloss, excellent printability, adhesion and durability, non-migrating pigments, and good opacity and elongation. Excellent when printed onto nylon mesh (micro and porthole) and dazzle cloth nylon jerseys. Excellent opacity, tensile strength & wash properties.

Printing

Recommendations: Mesh: 60-83 threads/in (24-34 threads/cm). Squeegee: Medium durometer, slightly rounded blade. Emulsion: direct, capillary films or a combination of both.

Curing: Flash Cure or Gel: 240° F. Full Cure: 300° F.

Wash-up: Screen wash or mineral spirits.

QUART [57]

FP-PENNANT-GOLD-Q	Gold
FP-PENNANT-WHT-Q	White

GALLON [57]

FP-PENNANT-GOLD-G	Gold
FP-PENNANT-WHT-G	White

5 GALLON [57]

FP-PENNANT-GOLD-5G	Gold
FP-PENNANT-WHT-5G	White

Other colors available



Infrared Non-Contact Thermometer Gun

Successful ink curing depends on correct temperatures, both of the fabric surface and inside the dryer.



This non-contact infrared thermometer with microprocessor accurately measures these temperatures.

The unit measures the surface temperature of an object by sensing its emitted energy, and transmitted energy. This information is collect, directed onto a detector, and translated by a microprocessor into a temperature reading displayed on the unit.

Features a backlit LCD; tenth degree temperature display, 7-second display hold. Simply aim at fabric, pull trigger.

HEAT GUN THERMOMETER [38]

SHOPKINS-RAYGUN..... Temperature heat gun, non contact





One Step Nylon Ink

Use One-Step Nylon Inks to print on untreated nylon fabrics such as coarse deniers used in back-packs and luggage and finer deniers used in garments and umbrellas.

Printing

Recommendations: Mesh: 60-110 threads/in for white and 110-195 threads/in for all other colors. Squeegee: 60-90 durometer, straight edge blade. Emulsion: direct or capillary films.

Curing: the inks flash quickly to allow multi-color production with cure/gel temperatures of 300° F. Gel or Flash Cure: 155° F. Full Cure: 300° F. Failure to cure ink properly causes poor wash fastness and unacceptable adhesion.

Wash-up: mineral spirits.

1. If the nylon material to be printed has been treated to repel water, waterproofing must be removed and the addition of Wilflex Hugger catalyst will be necessary.
2. Test for water repellence with a drop of water on the fabric surface. Zero water penetration and a ready flow over the surface indicate a water repellence treatment.
3. Facilitate adhesion to these garments by:
 - a. Sending the unprinted garment down the dryer belt.
 - b. Wiping the print area with Acetone or rubbing alcohol. Reminder: Acetone and alcohol are flammable. Evaporate completely from the fabric before running through a dryer.
 - c. Mixing in Hugger catalyst into the OSN ink, 10 percent by weight.
4. Cure temperature of 300°F will give best adhesion.
5. ALWAYS pre-print and test for adhesion BEFORE printing production run.

QUART [57]

FP-OSN-1100-Q.....	White
FP-OSN-1900-Q.....	Black
FP-OSN-4000-Q.....	Scarlet Red
FP-OSN-6000-Q.....	Navy Blue
FP-OSN-6210-Q.....	Light Royal
FP-OSN-7000-Q.....	Kelly Green
FP-OSN-8000-Q.....	Gold
FP-OSN-8010-Q.....	Light Gold
FP-OSN-8100-Q.....	Lemon Yellow

GALLON [57]

FP-OSN-1100-G.....	White
FP-OSN-1900-G.....	Black
FP-OSN-7000-G.....	Kelly Green
FP-OSN-8000-G.....	Gold
FP-OSN-8100-G.....	Lemon Yellow



Transflex Color Process

Wilflex TransFlex Color Process has been formulated to produce four-color process heat release transfers. Superb color can be achieved when using either full photographic or airbrush quality graphics.

TRANSFLEX 4/COLOR PROCESS INKS [57]

FP-TF-69850-Q.....	Cyan Transflex, Quart
FP-TF-69850-G.....	Cyan Transflex, Gallon
FP-TF-69850-5G.....	Cyan Transflex, 5 gal
FP-TF-49850-Q.....	Magenta Transflex, Quart
FP-TF-49850-G.....	Magenta Transflex, Gallon
FP-TF-49850-5G.....	Magenta Transflex, 5 gal
FP-TF-89850-Q.....	Yellow Transflex, Quart
FP-TF-89850-G.....	Yellow Transflex, Gallon
FP-TF-89850-5G.....	Yellow Transflex, 5 gal

Transflex® Printable Adhesive

Transfers backed up with Transflex Printable Adhesive #10210TF will have excellent adhesion to a wide range of substrates, improved stretch and washability to 204° F. It is printed last over all Transflex colors in a screen printed design to enhance adhesion.

PRINTABLE ADHESIVE #10210TF [57]

FP-TF-10210-Q.....	Quart
FP-TF-10210-5G.....	5 gal
FP-TF-10210-G.....	Gallon
FP-TF-10210-GR.....	Gram

Transflex® #10000 Clear

Transflex #10000 Clear is a clear backer to all Transflex inks to extend the wash and durability of every transfer. It may be used as a first down print for transfer four color process transfers for color contrast and keeps the half-tone dot in definition. Also, It may be used as a first down print for Transflex One PacPuff to extend the stretch and wash durability of the puff.

#10000 CLEAR [57]

FP-TF-10000-Q.....	Quart
FP-TF-10000-G.....	Gallon
FP-TF-10000-5G.....	5 gal

Reflective Base

Direct Reflective Base is a plastisol base for direct screen applications on textiles. Reflective beads are dispersed into a base to create a reflective product with excellent print and wash properties. The printed product produces a reflective response when a light source illuminates the printed surface. The reflective base should be used in combination with up to 6% (by weight) of Wilflex pigment concentrates or finished ink to create reflective colors. We do not recommend printing the base without the addition of pigment concentrates or finished ink.

REFLECTIVE BASE WITH BEADS [57]

FP-IS-10015-Q.....	Reflective base, qt
FP-IS-10015-G.....	Reflective base, gal
FP-IS-10015-5G.....	Reflective base, 5 gal



Transflex Soft™

Wilflex Transflex Soft is a soft-feel, hot-split transfer ink formulated to print on white or pastel substrates. Transflex Soft Process Colors allow four-color process transfer prints to be produced with or without a clear back-up ink and may be used for cold-peel transfers.

Recommended Substrates: knitted fabrics, cotton, linens, polyester blends and rayon.

Printing and Transferring Recommendations: Mesh: opacity transfers require a 60-86 threads/in mesh screen. Finer meshes such as 110-195 threads/in can be used when transferring on to lighter colored substrates or for producing fine detail prints. Transfers should be transferred at 365-375° F for 5-7 seconds at 40-45 PSI. The transfer paper should be peeled immediately after transferring. When producing cold-peel transfers, allow to cool for 15 seconds before removing the paper.

Emulsion: solvent-resistant direct emulsions or capillary films.

Transfer Papers: Wyndstone Heat Transfer Papers and some other paper types.

Curing Gel: 195-230° F.

Modifiers: small amounts of Reducer #1 (3-5% by weight) may be added to aid in the breakdown of the false body that builds up in plastisols over a period of time.

Cleaning: solvents or Wilflex screen wash.

QUART

FP-TF-19000-Q	Black
FP-TF-23800-Q	Spice Brown
FP-TF-40000-Q	Scarlet
FP-TF-48600-Q	Burgundy
FP-TF-50400-Q	Russell Purple
FP-TF-60000-Q	Navy
FP-TF-60650-Q	Contact Blue
FP-TF-62100-Q	Light Royal Blue
FP-TF-70000-Q	Kelly Green
FP-TF-75300-Q	Turquoise
FP-TF-8010S-Q	Light Gold
FP-TF-81000-Q	Lemon Yellow

[57]

GALLON

FP-TF-19000-G	Black
FP-TF-23800-G	Spice Brown
FP-TF-40000-G	Scarlet
FP-TF-48600-G	Burgundy
FP-TF-50400-G	Russell Purple
FP-TF-60000-G	Navy
FP-TF-60650-G	Contact Blue
FP-TF-62100-G	Light Royal Blue
FP-TF-70000-G	Kelly Green
FP-TF-75300-G	Turquoise
FP-TF-8010S-G	Light Gold
FP-TF-81000-G	Lemon Yellow

[57]

5 GALLON

FP-TF-19000-5G	Black
FP-TF-23800-5G	Spice Brown
FP-TF-40000-5G	Scarlet
FP-TF-42000-5G	Dallas Scarlet
FP-TF-48600-5G	Burgundy
FP-TF-50400-5G	Russell Purple
FP-TF-60000-5G	Navy
FP-TF-60650-5G	Contact Blue
FP-TF-62100-5G	Light Royal Blue
FP-TF-70000-5G	Kelly Green
FP-TF-75300-5G	Turquoise
FP-TF-8010S-5G	Light Gold
FP-TF-81000-5G	Lemon Yellow

[57]



Transflex® Super

Transflex Super is a soft-feel, hot-split transfer ink with the appearance of a direct print. They give excellent opaque prints on dark fabrics and also offer wide improvements in printability and transfer latitude over conventional hot-split transfer inks. Using Transflex Super ink, the printer is able to produce high definition transfers using fine screen meshes without losing opacity. It can also produce cold-peel transfers.

Recommended Substrates: knitted fabrics, cotton, linens, polyester, polyester blends and rayon.

Print and Transfer Recommendations: Mesh: high opacity transfers require a 60-86 threads/in mesh. Use 110-195 threads/in mesh when transferring to a light colored substrate or for producing fine detail prints. Transfers should be transferred at 365-375° F for 5 to 7 seconds at 40-45 PSI and peeled immediately for optimum results.

Cold-peel transfers should cool for 15 seconds.

Emulsion: solvent-resistant direct emulsions or capillary films.

Recommended Transfer Papers: Wyndstone Heat Transfer Papers, Hobart-McIntosh and some other paper types.

Curing Gel: 195-230 F.

Modifiers: add small amounts of Reducer #1 (3-5% by weight) to aid in the breakdown of the false body that builds up over time.

Cleaning: solvents or screen wash.

QUART

FP-TF-10440-Q	Base
FP-TF-1100-Q	Super White
FP-TF-15370-Q	Super Silver Shimmer
FP-TF-2380-Q	Super Spice Brown
FP-TF-3040-Q	Super Dolphin Orange
FP-TF-4050-Q	Super Red
FP-TF-47030-Q	Super Fushia
FP-TF-5701-Q	Super Purple
FP-TF-67040-Q	Super Bright Blue
FP-TF-6705-Q	Super Royal Blue
FP-TF-70501-Q	Super Dallas Green
FP-TF-8010-Q	Super Light Gold
FP-TF-8557-Q	Super Ultra Gold
FP-TF-8702-Q	Super Lemon Yellow

[57]

GALLON

FP-TF-10440-G	Base
FP-TF-1100-G	Super White
FP-TF-15370-G	Super Silver Shimmer
FP-TF-2380-G	Super Spice Brown
FP-TF-3040-G	Super Dolphin Orange
FP-TF-4050-G	Super Red
FP-TF-47030-G	Super Fushia
FP-TF-5701-G	Super Purple
FP-TF-67040-G	Super Bright Blue
FP-TF-6705-G	Super Royal Blue
FP-TF-70501-G	Super Dallas Green
FP-TF-8010-G	Super Light Gold
FP-TF-8557-G	Super Ultra Gold
FP-TF-8702-G	Super Lemon Yellow

[57]

5 GALLON

FP-TF-10440-5G	Base
FP-TF-1100-5G	Super White
FP-TF-15370-5G	Super Silver Shimmer
FP-TF-2380-5G	Super Spice Brown
FP-TF-3040-5G	Super Dolphin Orange
FP-TF-4050-5G	Super Red
FP-TF-47030-5G	Super Fushia
FP-TF-5701-5G	Super Purple
FP-TF-67040-5G	Super Bright Blue
FP-TF-6705-5G	Super Royal Blue
FP-TF-70501-5G	Super Dallas Green
FP-TF-8010-5G	Super Light Gold
FP-TF-8557-5G	Super Ultra Gold
FP-TF-8702-5G	Super Lemon Yellow

[57]



Color Systems

Pigment Concentrate Kit

The Wilflex Pigment Concentrate (PC) Kit includes : 672 color chips, color book, 30 pints of pigment concentrates, one gallon of MP, Genesis and NuPuff Base, two ink spatulas, 24 mixing cups, three types of spray adhesives, aerosol screen wash, quart of Finesse and Reducer #1, pint of curable reducer, customer registration card, color chips showing color strength of pigment concentrates, instructions, textile user's manual, weight and volume conversion chart, trouble shooting guide, accessory equipment guide and PC/Base ratios for custom blending.

PIGMENT CONCENTRATE KIT [57]

FP-PC-KIT	Complete PC Kit
FP-PC-BOOK	Wilflex Pigment Concentrate Formula Book

Pigment Concentrates

Wilflex Pigment Concentrates are a blend of carefully chosen dry pigments and plasticizers. Precision production of these pigment concentrates produce an ink with excellent dispersion and color development. This dispersion allows Concentrates to be combined with bases, producing inks with easy passage through screen mesh. Proper color development of Concentrates enables bright, intense ink shades to be produced with minimal amounts added to the base. They are lead-free and PCB-free.

GRAM	[57]
FP-PC-1000-GR	Clear
FP-PC-1010-GR	White
FP-PC-1011-GR	Extra White
FP-PC-1020-GR	Brown
FP-PC-1025-GR	Dark Brown
FP-PC-1037-GR	Fast Red
FP-PC-1040-GR	Red
FP-PC-1045-GR	Maroon
FP-PC-1047-GR	Magenta
FP-PC-1057-GR	Violet
FP-PC-1068-GR	Blue
FP-PC-1070-GR	Green
FP-PC-1077-GR	Fast Gold
FP-PC-1083-GR	Blaze Gold
FP-PC-1085-GR	Ultra Gold
FP-PC-1086-GR	Blaze Yellow
FP-PC-1087-GR	Bright Yellow
FP-PC-1094-GR	Velvet Black
FP-PC-1130-GR	Bright Orange
FP-PC-1160-GR	Bright Blue
FP-PC-1165-GR	Marine Blue
FP-PC-1202-GR	Silver Shine
FP-PC-1213-GR	Silver
FP-PC-1800-GR	Electron Yellow
FP-PC-1801-GR	Electron Blue
FP-PC-1802-GR	Electron Green
FP-PC-1806-GR	Electron Rocket Red
FP-PC-1907-GR	Magenta
FP-PC-1908-GR	Fluor. Purple

QUART	[57]
FP-PC-1010-Q	White
FP-PC-1011-Q	Extra White
FP-PC-1020-Q	Light Brown
FP-PC-1025-Q	Dark Brown
FP-PC-1040-Q	Red
FP-PC-1045-Q	Maroon
FP-PC-1057-Q	Violet
FP-PC-1068-Q	Blue
FP-PC-1070-Q	Green
FP-PC-1083-Q	Blaze Gold
FP-PC-1086-Q	Blaze Yellow
FP-PC-1087-Q	Bright Yellow
FP-PC-1094-Q	Velvet
FP-PC-1130-Q	Bright Orange
FP-PC-1160-Q	Bright Blue
FP-PC-1202-Q	Silver Shine

GALLON	[57]
FP-PC-1000-G	Clear
FP-PC-1010-G	White
FP-PC-1011-G	Extra White
FP-PC-1020-G	Light Brown
FP-PC-1025-G	Dark Brown
FP-PC-1037-G	Fast Red
FP-PC-1040-G	Red
FP-PC-1045-G	Maroon
FP-PC-1047-G	Magenta
FP-PC-1057-G	Violet
FP-PC-1068-G	Blue
FP-PC-1070-G	Green
FP-PC-1077-G	Fast Gold
FP-PC-1083-G	Blaze Gold
FP-PC-1085-G	Ultra Gold
FP-PC-1086-G	Blaze Yellow
FP-PC-1087-G	Bright Yellow
FP-PC-1094-G	Velvet
FP-PC-1130-G	Bright Orange
FP-PC-1160-G	Bright Blue
FP-PC-1165-G	Marine Blue
FP-PC-1202-G	Silver Shine
FP-PC-1213-G	Silver
FP-PC-1800-G	Electron Yellow
FP-PC-1801-G	Electron Blue
FP-PC-1802-G	Electron Green
FP-PC-1806-G	Electron Rocket Red
FP-PC-12100-LB	Shimmer Pearl
FP-PC-12240-LB	Rainbow Flake

5 GALLON	[57]
FP-PC-1000-5G	Clear
FP-PC-1800-G	Electron Yellow

PIGMENT CONCENTRATE POWDERS, LB	[57]
FP-PC-1206-LB	Pale Gold
FP-PC-1208-LB	Dark Gold
FP-PC-1209-LB	Rich Gold

Fluorescents

GRAM	[57]
FP-PC-1904-GR	Fluor. Pink
FP-PC-1905-GR	Fluor. Neon

QUART	[57]
FP-PC-1904-Q	Fluor. Pink
FP-PC-1908-Q	Fluor. Purple

GALLON	[57]
FP-PC-1904-G	Fluor. Pink
FP-PC-1907-G	Fluor. Magenta
FP-PC-1908-G	Fluor. Purple

5 GALLON	[57]
FP-PC-1904-5G	Fluor. Pink



Plastisol Modifiers

Reducer #1

A general purpose viscosity reducer for plastisol inks. It is a plasticizer blend, therefore excessive use may cause cure and bleed problems. Recommended: up to 5% addition (by weight) to GNS, MP, SSV up to 3% addition (by weight) to TF and NuPuff.

REDUCER #1 [57]

FP-SSV-REDUCER #1	Gallon
FP-SSV-REDUCER #1 5G	5 gal
FP-SSV-REDUCER #1-GR	Gram

Thickener #1

A viscous brown liquid used to increase viscosity and add body to inks.

THICKENER #1 [57]

FP-SSV-THICKENER #1	Thickener #1, gallon powder
FP-SSV-THICKENER #2	Thickener #2, gallon
FP-SSV-THICKNER #2 5G	5 gal
FP-SSV-THICKENER #1 GR	Gram

Reducer #11

A plastisol viscosity reducer, plasticizer type, suited for SSV-FF and MCV-FF ink lines; up to 5% (by weight) recommended.

REDUCER #11 [57]

FP-SSV-REDUCER #11	Reducer #11, gallon
FP-SSV-REDUCER #11GR	Reducer #11, gram

CURABLE UNIVERSAL REDUCER [57]

FP-UNIVREDUCER-G	Universal reducer, gallon
FP-UNIVREDUCER-5G	Universal reducer, 5 gallon
FP-UNIVREDUCER-GR	Universal reducer, gram
FP-UNIVREDUCER-Q	Universal reducer, quart

Add any amount, doesn't affect curing

Finesse #10150

A plastisol additive for Wilflex inks that is designed to soften and extend general purpose and specialty Wilflex inks.

FINESSE SOFTENER & EXTENDER [57]

FP-MP-10150FNS-Q	Finesse, quart
FP-MP-10150FNS-G	Finesse, gallon
FP-MP-10150FNS-5G	Finesse, 5 gallon

SOFTHAND EXTENDER CLEAR BASE #10140

FP-MP-SOFTTEXTENDER-Q	Softhand extender clear base, qt
FP-MP-SOFTTEXTENDER-G	Softhand extender clear base, gallon
FP-MP-SOFTTEXTENDERSG	Softhand extender clear base, 5 gal





Matchmaker™

Matchmaker is an easy-to-use, easy-to-mix color matching system that enables printers to produce accurate simulations of PANTONE® Color Formula Guide colors on white and light cotton, cotton blends and some synthetic fabrics. It also produces soft-hand inks for high production, wet-on-wet printing. Colors matched under D65 simulated daylight. When blended according to formulations, resulting colors vary in opacity from transparent to semi-opaque. For bleed resistance, an underbase white, such as 11480HT Bright Tiger must be used.

Printing Recommendations: Mesh: 110-305 threads/in. Squeegee: 60 to 90 durometer, straight edge blade. Emulsion: direct or capillary films. Curing: Full Cure: 320° F.

Modifiers: viscosity modification is not recommended. However, if necessary, 10150 GNS Finesse and 10070 Curable Reducer may be used to extend or reduce ink, but these additions may alter the color and performance of the ink.

Maximizing Options: Enhancing Color Brightness Suggested Method: mix formula as given (omitting Finesse), then add closest GNS Fluorescent color in quantity, starting at 40%. Standard Genesis Fluorescent colors may be added in any quantity. For brighter reds, add 90600GNS Fluorescent Red. For brighter magentas, add 90700GNS Fluorescent Magenta. Genesis Fluorescent colors have similar print characteristics to MatchMaker, therefore additions should

not alter print characteristics. Increasing Opacity: • Decrease or eliminate Finesse from given MM formula; small additions of MM White may be added as some MM colors will appear darker than target with removal of Finesse. However, in most cases, the deeper shade will not cause difficulties where more opacity is desired.

Wash-up: Wilflex screen wash or other solvents.

QUART

[571]

FP-GNS-9000-Q.....	Fluor. Yellow
FP-GNS-9020-Q.....	Fluor. Green
FP-GNS-9030-Q.....	Fluor. Orange
FP-GNS-9040-Q.....	Fluor. Pink
FP-GNS-9050-Q.....	Fluor. Neon
FP-GNS-9060-Q.....	Fluor. Red
FP-GNS-9070-Q.....	Fluor. Magenta

GALLON

[571]

FP-GNS-9000-G.....	Fluor. Yellow
FP-GNS-9010-G.....	Fluor. Blue
FP-GNS-9020-G.....	Fluor. Green
FP-GNS-9030-G.....	Fluor. Orange
FP-GNS-9040-G.....	Fluor. Pink
FP-GNS-9050-G.....	Fluor. Neon
FP-GNS-9060-G.....	Fluor. Red
FP-GNS-9070-G.....	Fluor. Magenta

5 GALLON

[571]

FP-GNS-9000-5G.....	Fluor. Yellow
FP-GNS-9010-5G.....	Fluor. Blue
FP-GNS-9020-5G.....	Fluor. Green
FP-GNS-9030-5G.....	Fluor. Orange
FP-GNS-9040-5G.....	Fluor. Pink
FP-GNS-9060-5G.....	Fluor. Red
FP-GNS-9070-5G.....	Fluor. Magenta

Tuf One PacPuff Transflex

Tuf One Pacpuff produces multi-dimensional graphics, either as an all-in-one puff ink or as an under-print to the standard Transflex hot-split inks. The puffed ink gives a suede feel and an embossed puff effect. Tuf One PacPuff is available as a neutral base that can be used on its own, or by the introduction of 5-8% of pigment concentrate by weight to create colored puff. Tuf One Pacpuff White can be used as a super white puff ink on its own, or as a puff back-up ink to any Transflex hot-split ink. It can be used right out of the container, without the application of particle adhesive powder to adhere the puff to the garment.

NEUTRAL BASE

[571]

FP-TF-10480-Q.....	Quart
FP-TF-10480-G.....	Gallon
FP-TF-10480-5G.....	5 gal

CREAM

[571]

FP-TF-12520-Q.....	Quart
FP-TF-12520-G.....	Gallon
FP-TF-12520-5G.....	5 gal



IS Yellow Sparkle #15340

Wilflex IS Yellow Sparkle produces subtle sparkle effects with high gloss and excellent durability. It is formulated in a fast fusing/curing plastisol to ease cure of heavy ink deposits typical of sparkle inks.

Substrates: light colored cotton, blends and some synthetic.

Printing Recommendations: Mesh: 25-60 threads/in. "S" quality thread suggested. Squeegee: slightly dull edge squeegee (55-60 durometer) and a soft printing surface for superior results. Emulsion: direct or 50-70 micron capillary stencil film and compatible emulsion.

Curing: 320° F.

Modifiers: add 5% Reducer #11 to reduce viscosity.

Wash-up: Wilflex screen wash or mineral spirits.

IS YELLOW SPARKLE 15340

[571]

FP-IS-15340-Q.....	Quart
FP-IS-15340-G.....	Gallon
FP-IS-15340-5G.....	5 gal





Autoprint Fast Fusion MCV-FF

MCV-FF (Fast Fusion) is a wet-on-wet plastisol screen printing ink formulated to cure at lower temperatures than conventional plastisols. It is suitable for light or pastel garments and is not recommended for dark fabrics. It is ideal for printing on heat-sensitive or stretch fabrics. MCV-FF has similar characteristics to SSV-FF but with lower opacity and higher gloss.

Recommended Substrates: cotton, cotton blends, acrylics and some polyesters. Ideal for printing on carpet/woven mats and lycra or stretch fabrics. Use coated stock for heat transfers.

Printing Recommendations: Mesh: for garment printing use 140-305 threads/in. For mat printing use 74-110 threads/in.

Emulsion: direct emulsions or capillary films.

Curing: Flash cure: 170-190° F. Cure: 270° F. Inks remelt at 300° F and may be cold-peel transferred at this temperature.

Modifiers: use up to 3% by weight of Reducer #11 to thin inks. Curable Reducer 10070 also reduces ink viscosity in quantities up to 10% (by weight).

Wash-up: mineral spirits, solvent-based screen cleaners or Wilflex screen wash.

METALLIC ULTRA GOLD [57]

FP-MCV-AP/FF-8557-Q	Quart
FP-MCV-AP/FF-8557-G	Gallon
FP-MCV-AP/FF-8557-5G	5 gal

MCV-AP/FF Gold Shimmer and Silver Shimmer

MCV-AP/FF Gold and Silver Shimmers produce a bright, shimmering color with excellent durability and washability. The shimmers have excellent opacity and may be printed on light and dark substrates, including cotton, cotton blends and synthetic textiles.

Printing Recommendations: Mesh: 60 and 110 threads/in allow the metallic particles to flow easily through the screen. Emulsion: direct emulsions and indirect or capillary films.

Curing: 320 F.

Modifiers: if necessary add up to 5% Reducer #11 or up to 10% Curable Reducer #10070 to reduce ink viscosity.

Wash-up: solvents or Wilflex screen wash.

GOLD GLITTER [57]

FP-MCV-AP/FF-8901-Q	Quart
FP-MCV-AP/FF-8901-G	Gallon
FP-MCV-AP/FF-8901-5G	5 gal

SILVER GLITTER [57]

FP-MCV-AP/FF-1533-Q	Quart
FP-MCV-AP/FF-1533-G	Gallon
FP-MCV-AP/FF-1533-5G	5 gal
FP-MCV-AP/FF-1533-GR	Gram

Straight-Up Additives

High density printing with Straight-Up Additives creates three-dimensional graphics in gloss, satin or suede. Straight-Up Satin and Suede produces prints of high opacity and dye bleed resistance with semi-gloss and matte finishes, respectively. Straight-Up Gloss has slightly reduced opacity when used on dark fabric grounds. For best print results add Straight-Up to the Wilflex MX Color System and Genesis Inks with a suggested mixing ratio of 75 parts of finished ink to 25 parts of Straight-Up. If you need a high density Pantone color, use the Wilflex MX Color Mixing System with Straight-Up. The combination will produce a high, vertical stack of ink that allows for fine-line print definition as well as open graphic content.

GLOSS [57]

FP-HDA-WP220SUP-G	Gallon
FP-HDA-WP220SUP-5G	5 gal

SATIN [57]

FP-HDA-WP221SUP-G	Gallon
FP-HDA-WP221SUP-5G	5 gal
FP-HDA-WP222SUP-Q	Quart

SUEDE [57]

FP-HDA-WP222SUP-G	Gallon
FP-HDA-WP222SUP-5G	5 gal

CLEAR [57]

FP-HDC-10018-G	Gallon
----------------------	--------



Glow in the Dark Ink

- Life of glow cycle is near infinity
- Screen mesh: 60-140 threads/inch
- Cure at 320° F
- Should be printed on white or over light colored plastisol

GLOW IN THE DARK INK [57]

FP-GNS-9990-Q	Glow in the dark ink, qt
FP-GNS-9990-G	Glow in the dark ink, gal
FP-GNS-9990-5G	Glow in the dark ink, 5 gal

MISCELLANEOUS ADDITIVES [57]

FP-NS-BASE-10425-G	Natural Suede Base, gallon
FP-NS-BASE-10425-5G	Natural Suede Base, 5 gal
FP-NS-BASE-10425-Q	Natural Suede Base, quart

METALLICS [57]

FP-PG METALLIC-5G	85065 Metallic pure gold, 5 gallon
FP-MET-85075-5G	# 85075 Metallic solid gold, 5 gallon
FP-MET-85075-G	# 85075 Metallic solid gold, gallon
FP-MET-85075-GR	# 85075 Metallic solid gold, gram
FP-MET-85075-Q	# 85075 Metallic solid gold, quart

STRETCH ADDITIVE [57]

FP-STRETCHADDITIVE-G	Stretch Additive, gal
FP-STRETCHADDITIVE-Q	Stretch Additive, qt
FP-STRETCHADDITIVE5G	Stretch Additive, 5 gal
FP-10008FF-G	Special effects clear, #10008FF - gallon

INK MIXING SERVICE [57]

ZMIXCHARGEFLEXIBLE G	Mixing charge for Wilflex ink, Gallon
ZMIXCHARGEFLEXIBLE Q	Mixing charge for Wilflex ink, quart
ZMIXCHARGEFLEXIBLE5G	Mixing charge for Wilflex ink, 5 gallon

